



## APPLICATION NOTES

---

ARMONÍAPLUS: HOW TO CREATE WEB VIEWS

## ARMONÍAPLUS: HOW TO CREATE WEB VIEWS

In the following document we will cover how to create Web Views within an ArmoníaPlus project. The deployment of Web Views on a ViewsHost device such as a PC or the Powersoft WM Touch allows the end user a quick and customized control of the system via any device supporting a web browser, including, but not limited to, a smart phone or tablet.

The following information will explain the necessary processes to configure and preview Web Views quickly and successfully, ensuring the user that the Dynamic Music Distribution system can be accessed and controlled through their selected devices without any compromise in quality and design.

The creation of Web Views for the end user gives them a quick and seamless control of their Dynamic Music Distribution system.

Through ArmoníaPlus, we can ensure the system integrator has every tool needed to complete their design with ease and confidence.



# Views Designer

In order to create a new Web View the designer must first access the 'Views Designer' window found across the top bar of ArmoníaPlus as displayed in Figure 1 below. This can be accessed by either selecting it with the use of a mouse or by pressing F3 on keyboard.

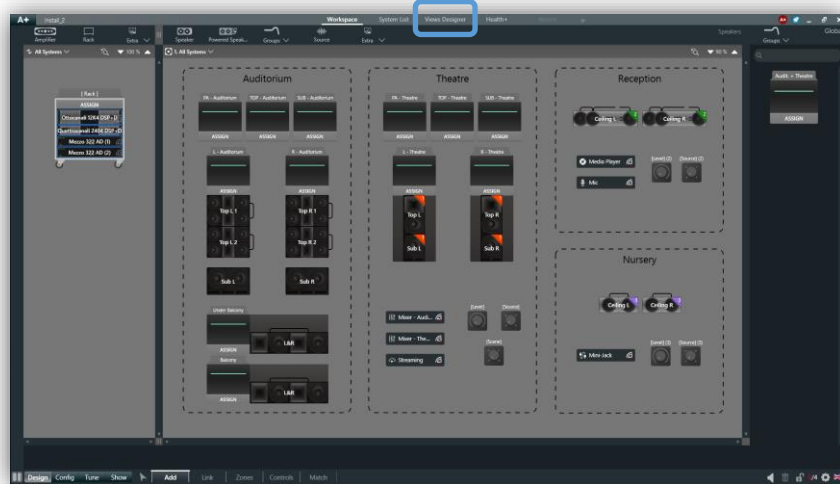


Figure 1 - Views Designer Window

Within the 'Views Designer' window the designer can add a new 'Web View' simply by selecting 'New Web View'. This is found on the left-hand side of the 'Views Designer' window displayed in Figure 2 below. The designer can also create multiple 'Web Views' simply by adding a 'New Web View'. This will allow the user to access multiple pages via their web browser.

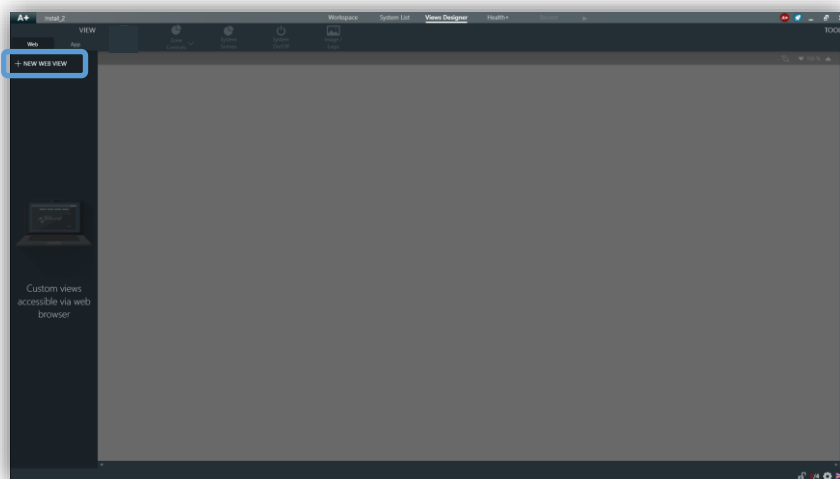
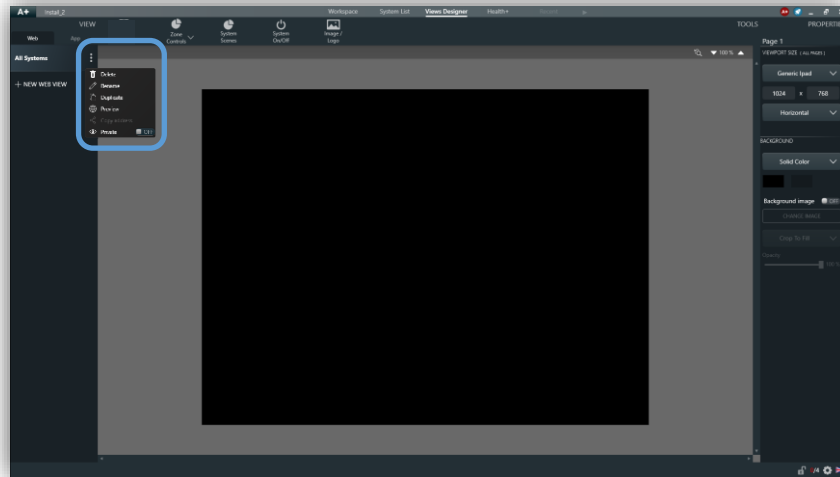


Figure 2 - Adding New Web Views



## Creating Web Views

Once a 'Web View' is added the designer can now begin creating a customized 'Web View' and can start by renaming the newly created 'Web View' by simply double clicking on the new view or by selecting the 'Options' tab (three dot beside the view name) as displayed in Figure 3 below. Within the 'Options' tab, the designer has the option of deleting, renaming or duplicating the 'Web View'.



*Figure 3 - Renaming, Deleting and Duplicating Web Views*

To the right-hand side of the 'Views Designer' window the designer can access the 'Viewport Size' properties menu. Shown in Figure 4 below. Here the designer has the option to choose between a variety of default templates allowing them to change the size of the 'Viewport' screen as well as the option of placing the 'Viewport' screen in a horizontal or vertical configuration.



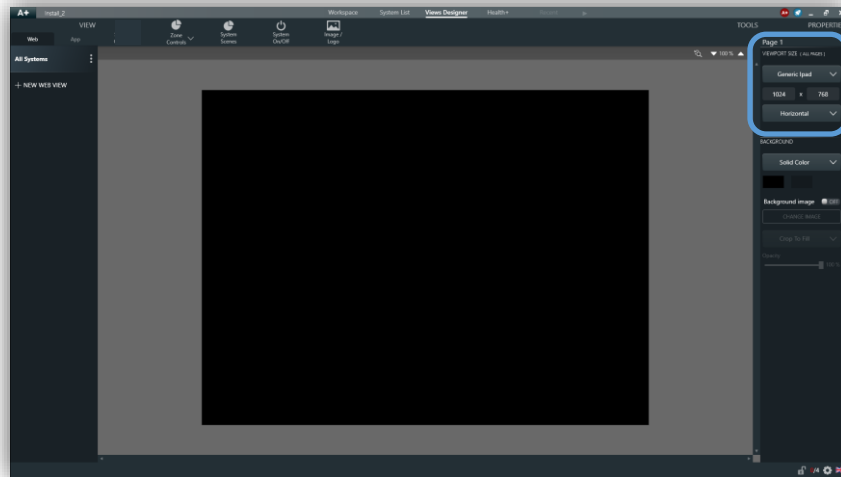


Figure 4 - ViewPort Size Properties

Below the 'Viewport Size' properties menu, the designer has the option to adjust the background color of the 'Viewport' screen as well as add a background image. The color options can be:

- Solid
- Gradient Vertical
- Gradient Diagonal

The designer can choose two different color schemes when selecting any of the gradient options. Shown below in Figure 5.

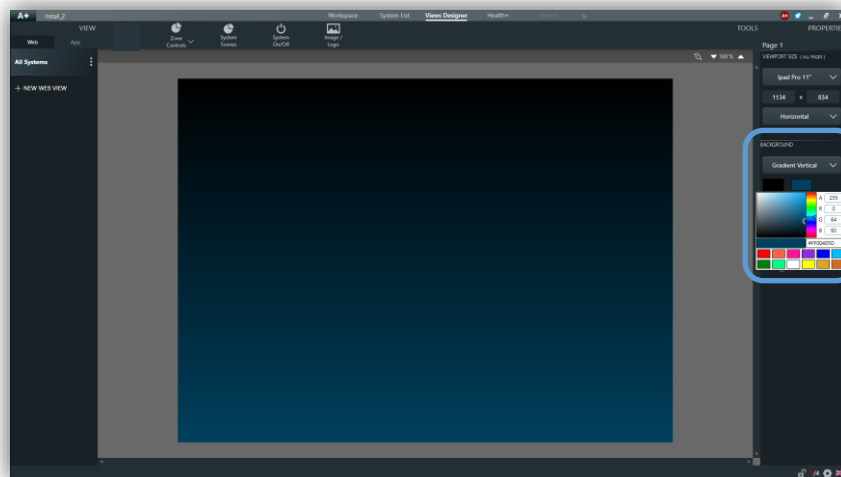


Figure 5 - Background Gradient Color Scheme

To set a background image the designer simply engages the background image 'On' and by clicking 'Change Image' the designer can load their custom background image. Within the drop-down menu the designer can choose how this image is placed within their 'Viewport' screen and lastly, the opacity of the image can be adjusted.



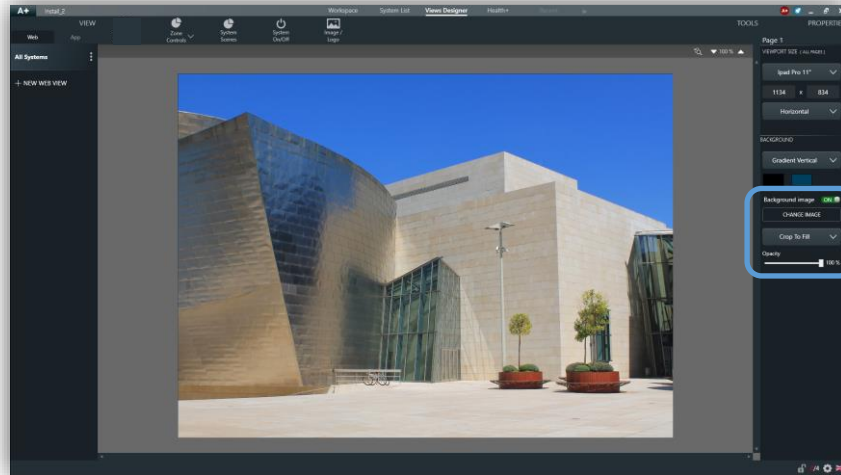


Figure 6 - Background Image On

Across the top portion of the 'Views Designer' window is the Tool Bar. By selecting the 'Image/Logo' tab and clicking on the blank image the designer can add a customized logo by clicking on 'Change Image' found in the right-hand properties window. As shown within Figure 7 below. The designer can resize the logo by clicking and dragging the outer edge or corner, while still having the ability to see the current size of the logo.

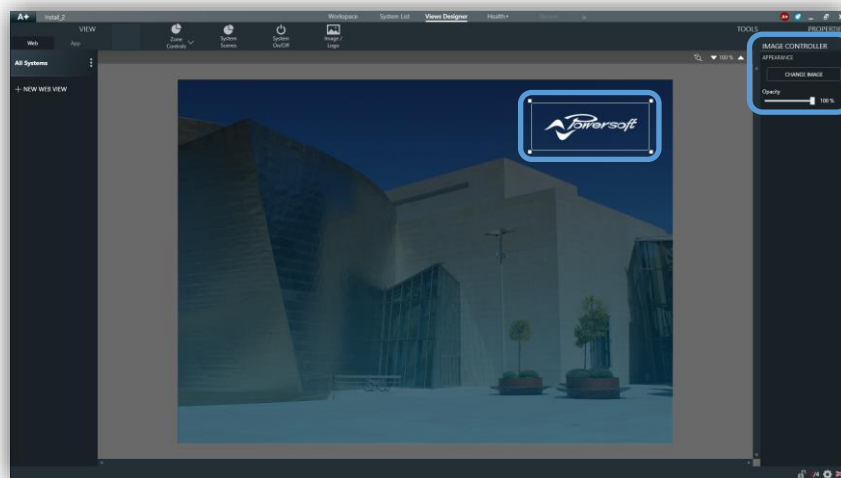


Figure 7 - Image/Logo

A Zone Controls can be added to the 'Viewport' screen choosing between single zones and/or multi zones. If single zones controls are added, by holding shift and selecting individual zones the designer can change the properties of multiple zones at once. Apart from the appearance changes (size, color and orientation) the designer has the option to control what parameters are available within these individual zones; by selecting them 'On' or 'Off' they can make visible:



- Text Label
- Level Adjust
- Source
- Mute button

When selecting a multi zone, 'On' or 'Off' the designer can make visible:

- Level Adjust
- Source
- Mute

Once Zone controls are created, the designer can assign the controls to the corresponding zone or zones created within the ArmoníaPlus 'Workspace' by selecting 'Assign Zone'.

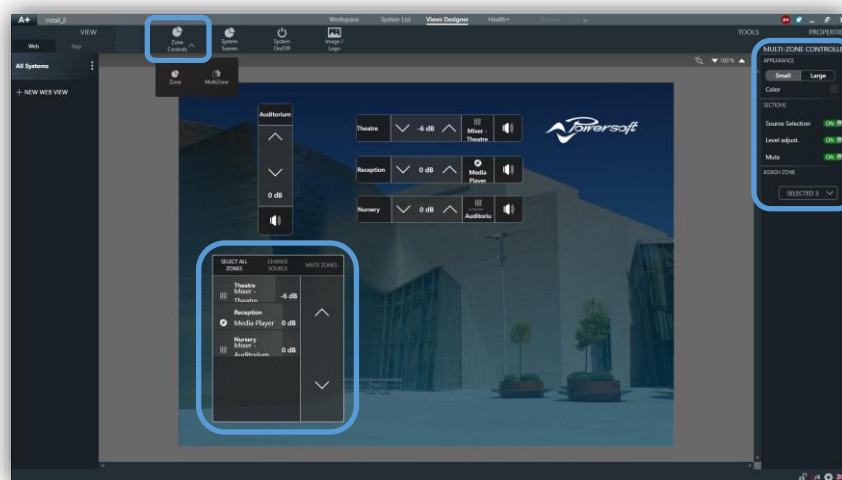


Figure 8 - Zone Control Parameters

The designer has the option of adding a 'System Scenes' control from the Tool Bar as well as a 'Power On/Off' control. Displayed in figure 9 below.

\*It is important to note that Zones and Scenes need to pre-exist within your ArmoníaPlus project in order to configure the related Web Views controls.





Figure 9 - System Scene and System ON/OFF controls

## Previewing Web Views

A preview of the Web Views created can be seen and checked using Google Chrome web browser. Within the options tab of your created 'Web Views' click 'Preview' and view the 'Viewport' window via your online browser.

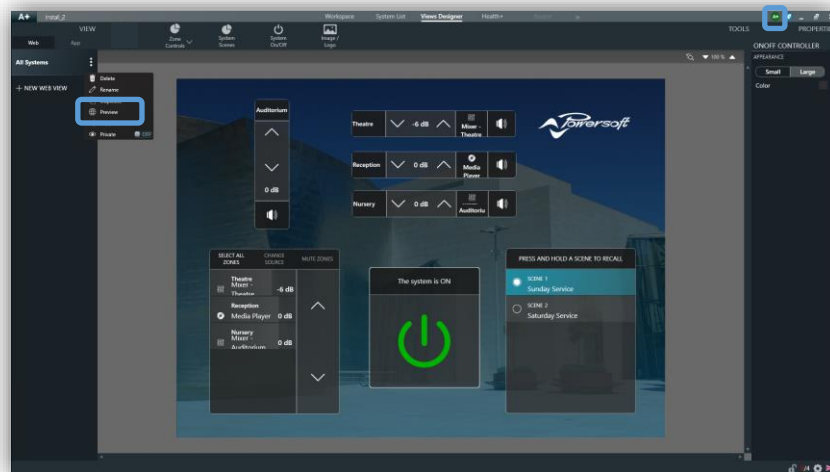


Figure 10 - Enabling Synchronization and Previewing Web Views





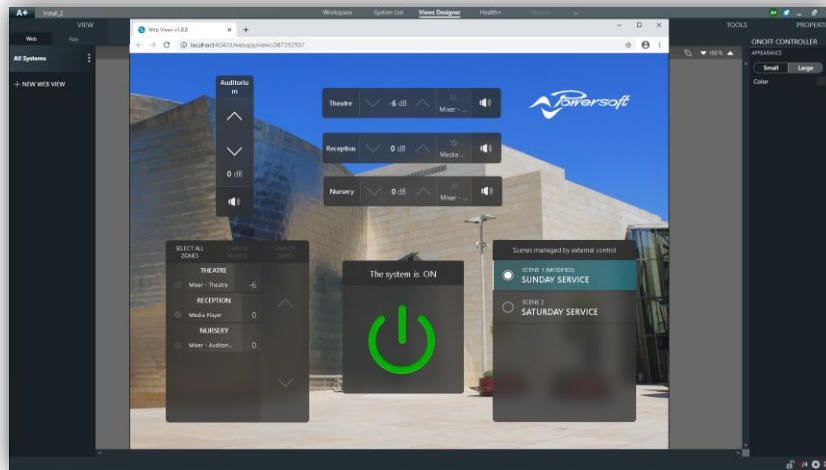


Figure 11 - Web Browser Preview

## Run Controls & Views

Once the design is finished and checked, the designer needs a ViewsHost available in the system. This can be the PC ViewsHost (downloadable from Powersoft website), or a WM Touch. To complete the system and use web views, launch “Run Control & Views” action (Rocket Button on top bar). Figure 12 displayed below. **The Web Views are now available typing the IP Address of the ViewsHost in a browser and ArmoniaPlus can now be closed.**

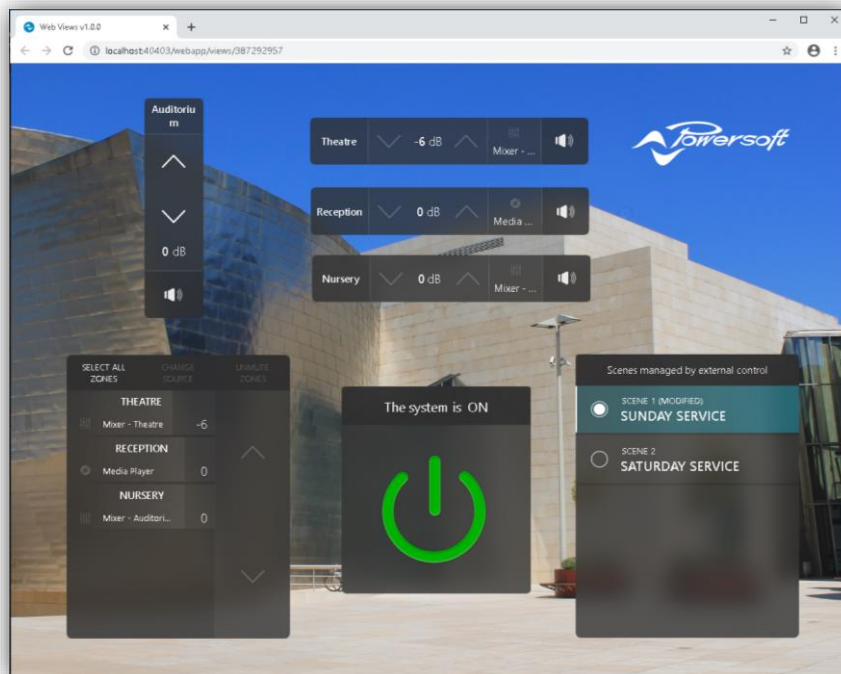


Figure 12- Web Views using Run Control & Views



**Document Title:** DOCUMENT TITLE

**Reference:** DO000288.00 REV.00

**Powersoft S.p.A**

Via E. Conti, 5- Scandicci (Fi) 50018- Italy

TELEPHONE: +39 055 7350230

General Enquires: [info@powersoft.it](mailto:info@powersoft.it)

Sales: [sales@powersoft.it](mailto:sales@powersoft.it)

Application & Technical Support: [support.audio@powersoft.it](mailto:support.audio@powersoft.it)

Service & Maintenance: [service@powersoft.it](mailto:service@powersoft.it)

[www.powersoft.com](http://www.powersoft.com)

