



APPLICATION NOTES

[VIEW HOST](#)

VIEW HOST

Installing and Running the View Host is an essential step to allowing end-users access to the pre-designed Web Views and App Views of your ArmoniaPlus 2.0 install project. Within this document we will discuss the necessary steps for a successful installation of View Host to allow the deployment of Web View and App View controls via a tablet or mobile device.

Installing View Host

To install the View Host click the following link [ArmoniaPlus 2.0](#) and scroll to the bottom of the web page. 'ArmoniaPlus Downloads'. Located within this section of the web page you will find 'View Host'. Figure 1 displayed below.

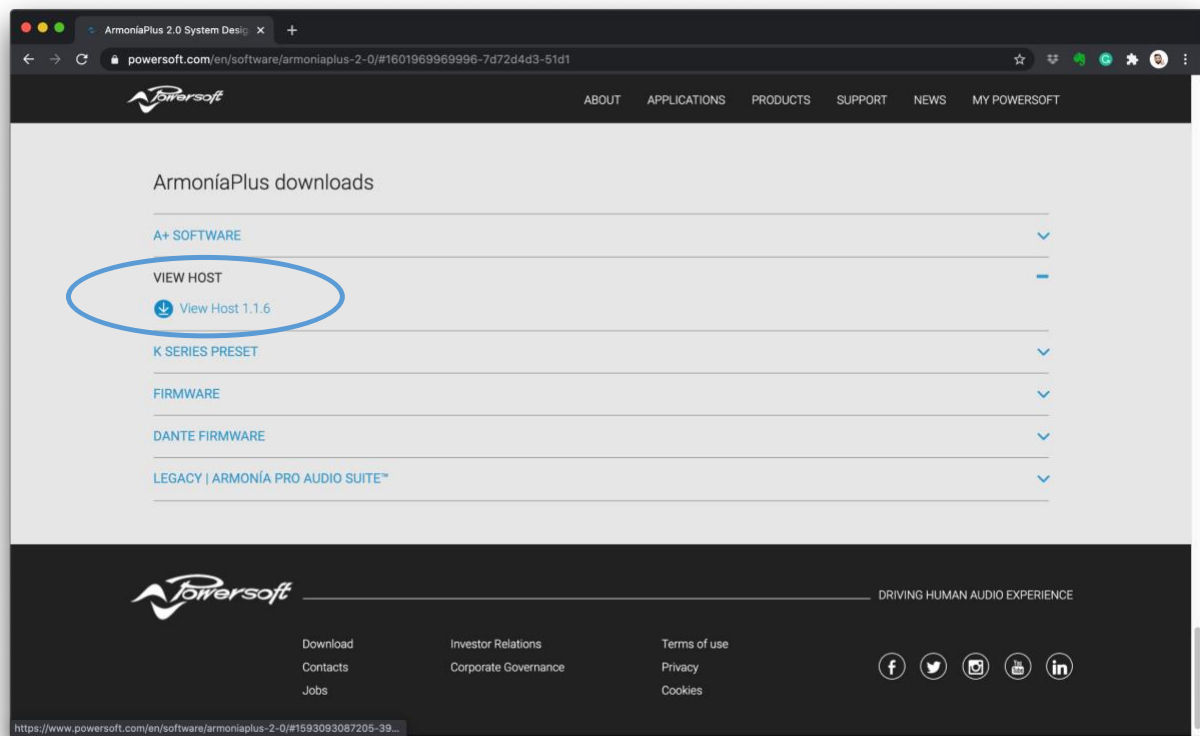


Figure 1- View Host Download Link



OS and Network Operation for View Host

It is important to note that the View Host can be installed only to a Windows-based OS device. However, View Host can run on multiple machines across the same network. Allowing it to be installed on any Windows-based device that will not be requiring the use of ArmoniaPlus 2.0. This gives the end-user access only to the available Web Views and App Views from the View Host machine on the network. Figure 2 displayed below.

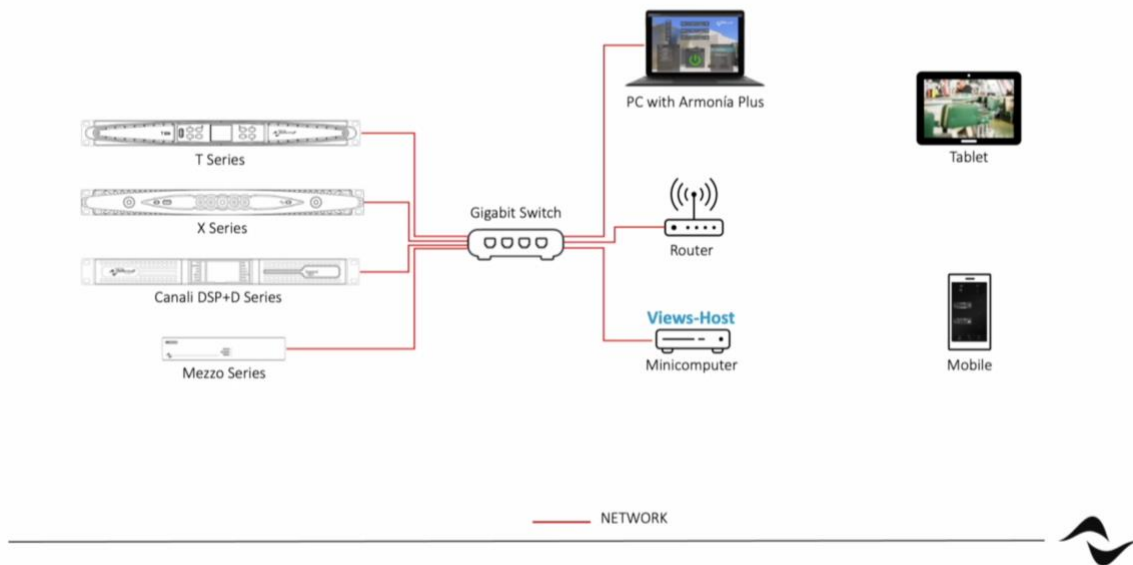


Figure 2- View Host Network Example

If the network has two Windows-based devices both operating the View Host. The PC with the lowest IP Address will be given control of the View Host. If you are using only passive controllers, there is no need to install the View Host on any device.



Amplifier Discovery and Synchronization

Upon opening your project within ArmoniaPlus 2.0. Select 'Design' > 'Match' > 'Discovery' within in the Workspace and Turn on 'Synchronization'. Figure 3 displayed below.

Wait for 'Synchronization' to complete. If required, the user may need to leave the 'Match' tab to access the 'Desynchronization Window' to do this simply select the 'Controls' tab. Figure 4 shown below. Once 'Synchronization' is complete the amplifier will show green within the 'Match' tab.

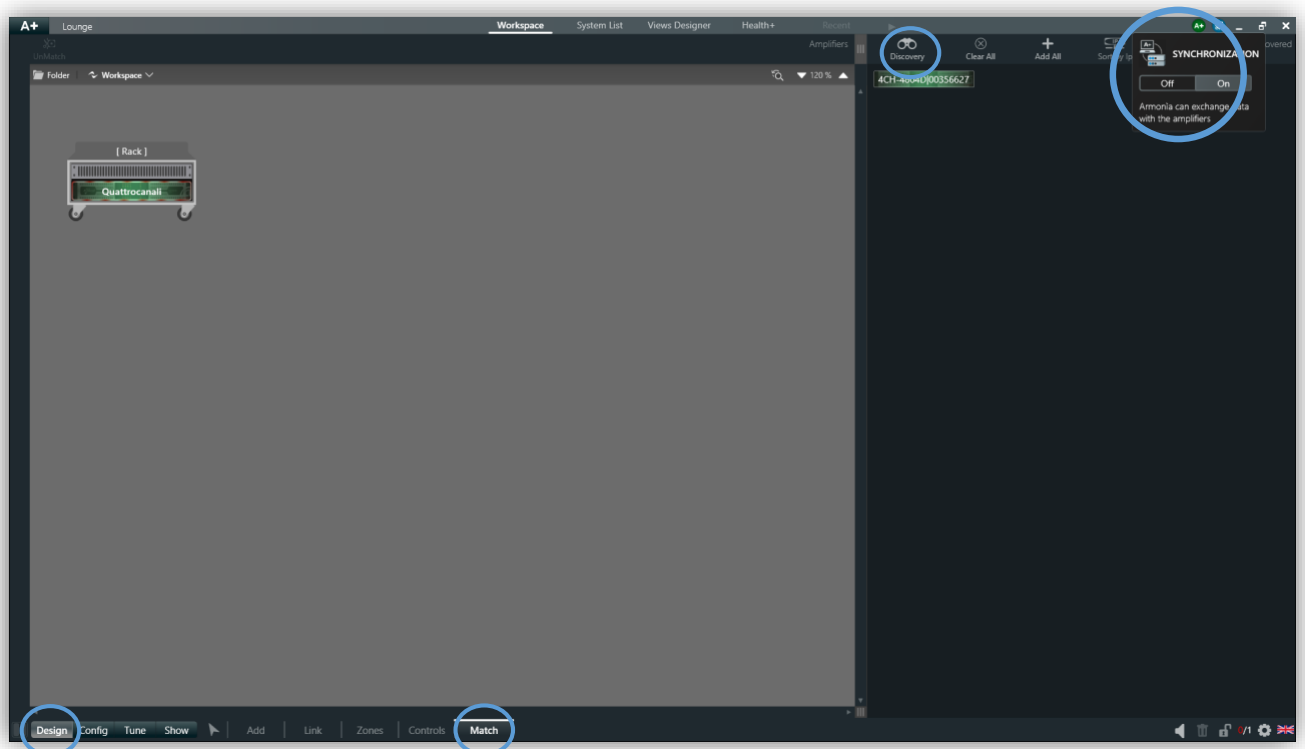


Figure 3 – Amplifier Discovery and Synchronization



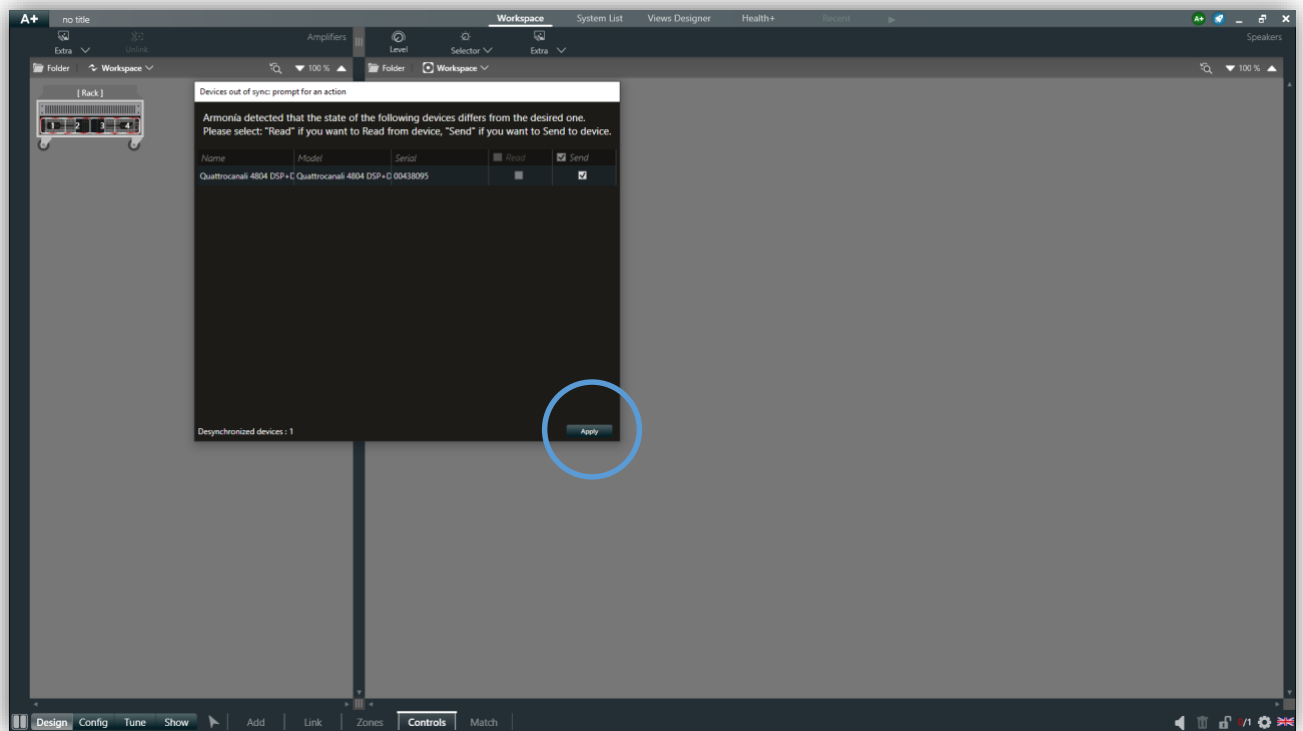


Figure 4- Desynchronization Window

Running Controls and Views

Once the user has completed designing the necessary Web Views and App Views. The system is ready to be launched. Shown in Figure 5 below.

Immediately after selecting 'Run' ArmoniaPlus 2.0 will prompt a window to save the project file. During the upload process of running 'Controls and Views' the user may notice 'HealthPlus' showing an alarm status. This is a normal operation and will pass once 'Controls and Views' are running.



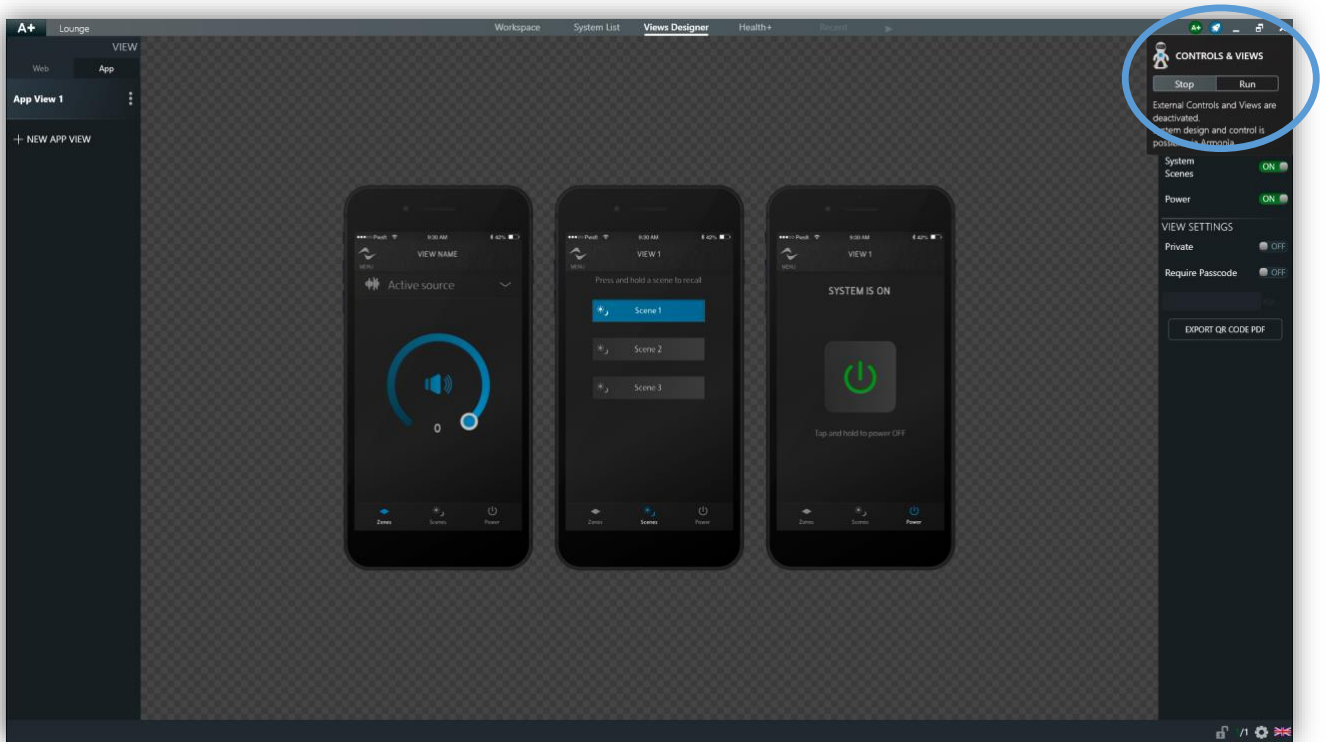


Figure 5- Running Controls and Views

After the system is running the user's laptop can directly access the views via a web browser from the IP address shown within the 'Controls and Views'. Figure 6 displayed below.

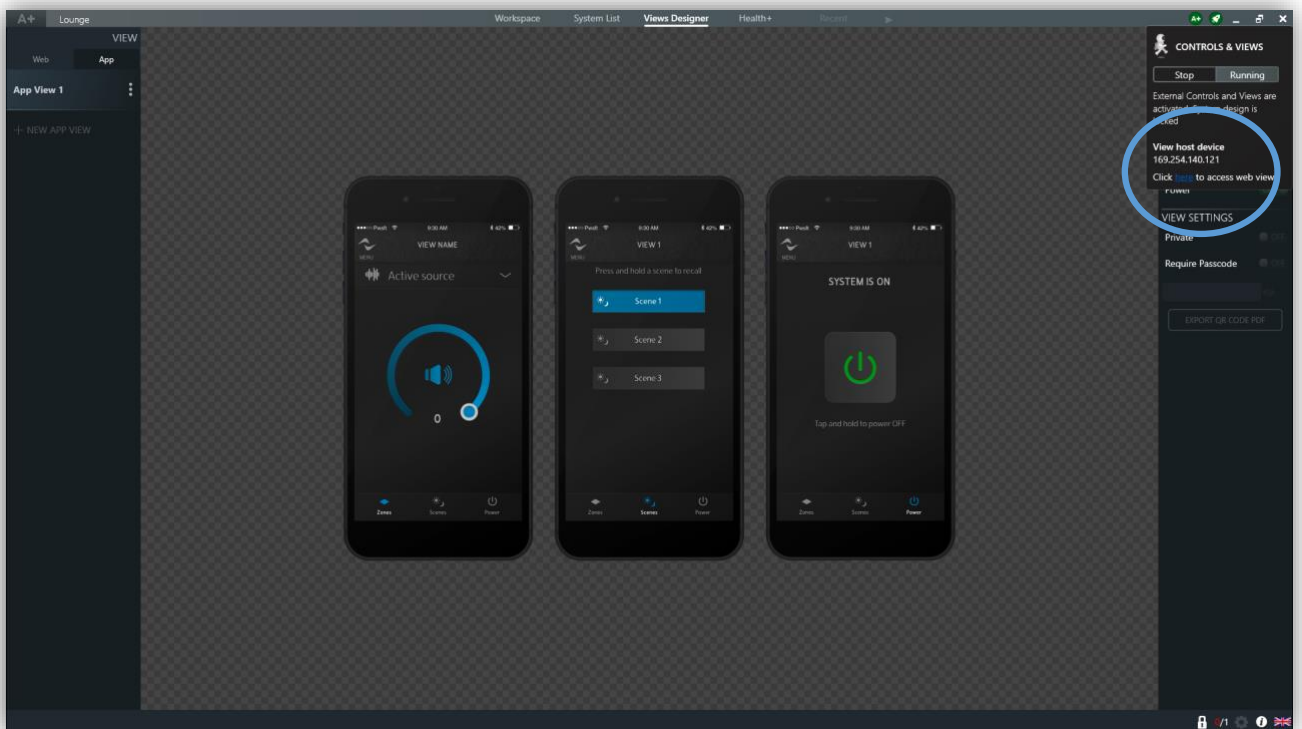


Figure 6- View Host IP Address



Accessing the View Host Device

After all views are tested and confirmed operational the user can now close ArmoniaPlus 2.0 and disconnect the PC from the network. Using the IP Address given by the 'View Host Device' any device connected to the network can now access and control the available Web Views and App Views. Figure 7 displayed below.

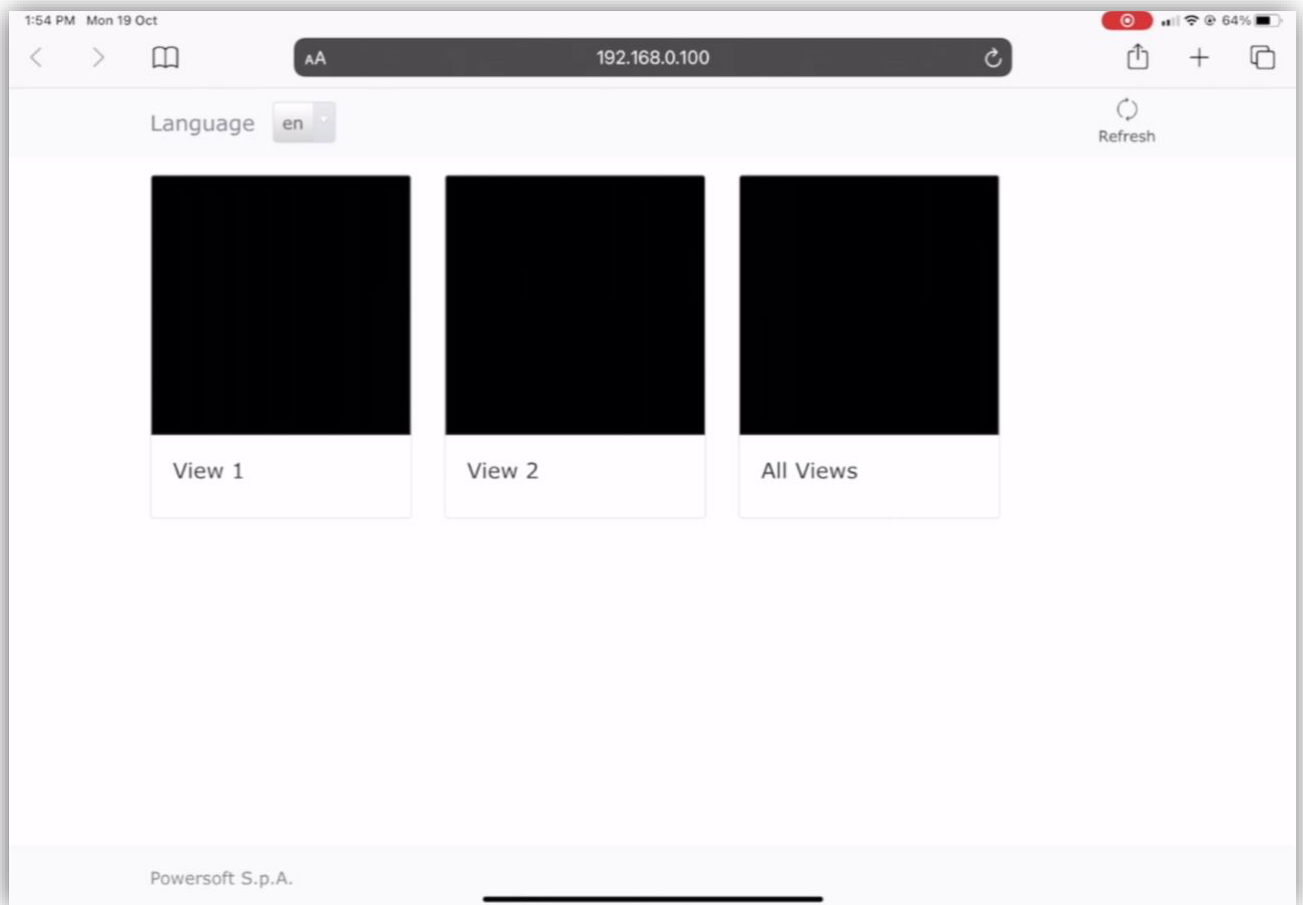


Figure 7- View Host Device Web Views



Document Title: VIEW HOST
Reference: DO000284.00 REV.00

Powersoft S.p.A

Via E. Conti, 5- Scandicci (Fi) 50018- Italy
TELEPHONE: +39 055 7350230

General Enquires: info@powersoft.it
Sales: sales@powersoft.it
Application & Technical Support: support.audio@powersoft.it
Service & Maintenance: service@powersoft.it

www.powersoft.com

