

OVERVIEW

ArmoníaPlus 2.9.2 builds on the 2.9 release with productivity improvements to OperatorView and additional tools for Health+ Speaker Verification.

New OperatorView controls bring system-wide standby and per-group status indication within a single click, while a redesigned Group Details view makes it easier to inspect linked amplifiers and speakers. In Health+, impedance curves can now be auto-scaled for clearer reading, compared in bulk straight from the search bar, and exported to CSV for offline analysis and reporting.

NEW FEATURES

OPERATORVIEW SYSTEM STANDBY CONTROL

A new System Standby control is now available in the OperatorView Tools panel. It exposes a single, clearly visible button that puts every device in the project into standby — or wakes them up — without having to act on each device individually.

To prevent unintended switching during live operation, pressing the control opens a confirmation prompt before the standby state is applied to the system. Once confirmed, the command is propagated to all online devices.

OPERATORVIEW GROUP STATUS CONTROL

A new Group Status tool has been added to the OperatorView Tools panel. The control reports the live operating state of the amplifiers and speakers assigned to the linked group at a glance — Online, Offline, Standby and similar device states — without having to leave OperatorView.

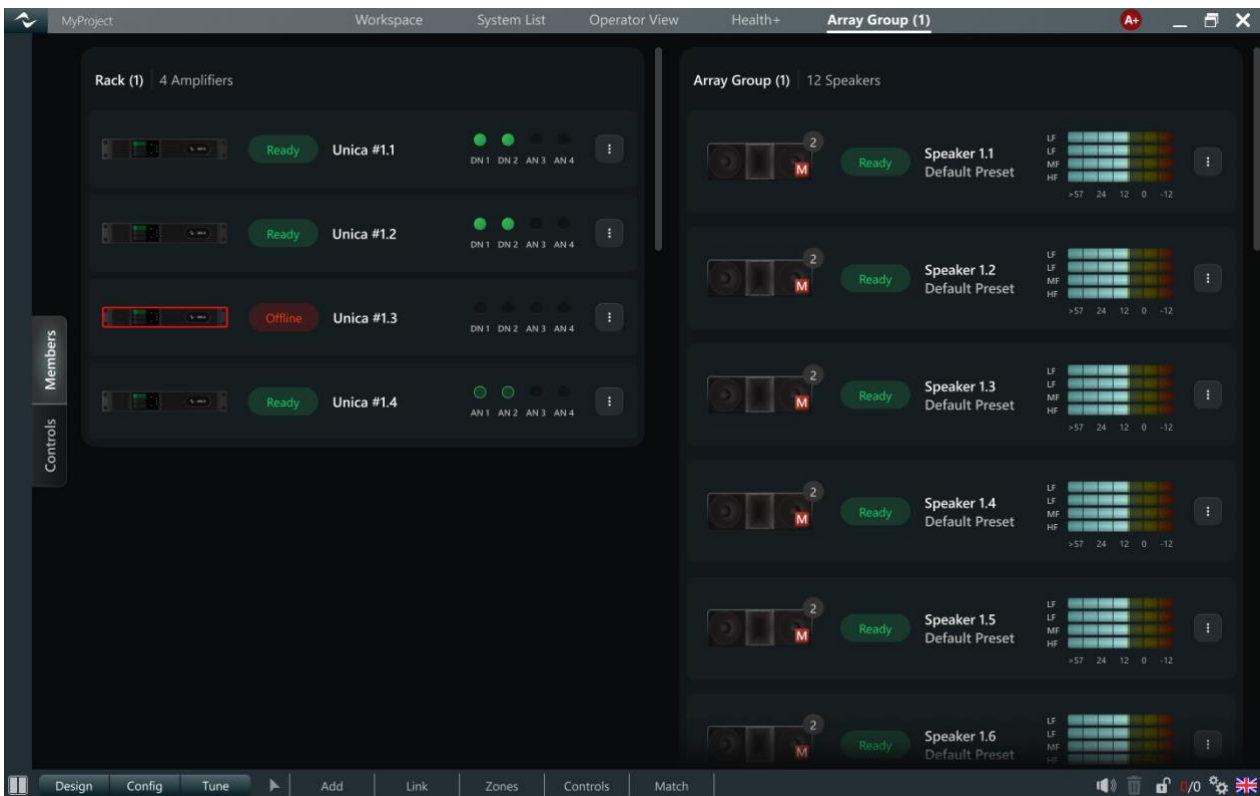
A double click on the Group Status control opens the new Group Details view (described below), so operators can drill down from the overview straight into the underlying device and speaker assignments whenever a deeper inspection is needed.

GROUP DETAILS VIEW

The Group Details view has been redesigned to give a complete picture of a group in one place. It now displays, side by side, the list of amplifiers belonging to the group with their operating state, and the list of linked speakers with their assigned channels and presets.

This makes it considerably easier to verify how a group is wired and configured, to spot mismatches between amplifier outputs and speakers, and to troubleshoot issues without jumping between Workspace, System List and the Match tab.

The view can be opened directly from the new Group Status control in OperatorView, or from any group entry in the Workspace.

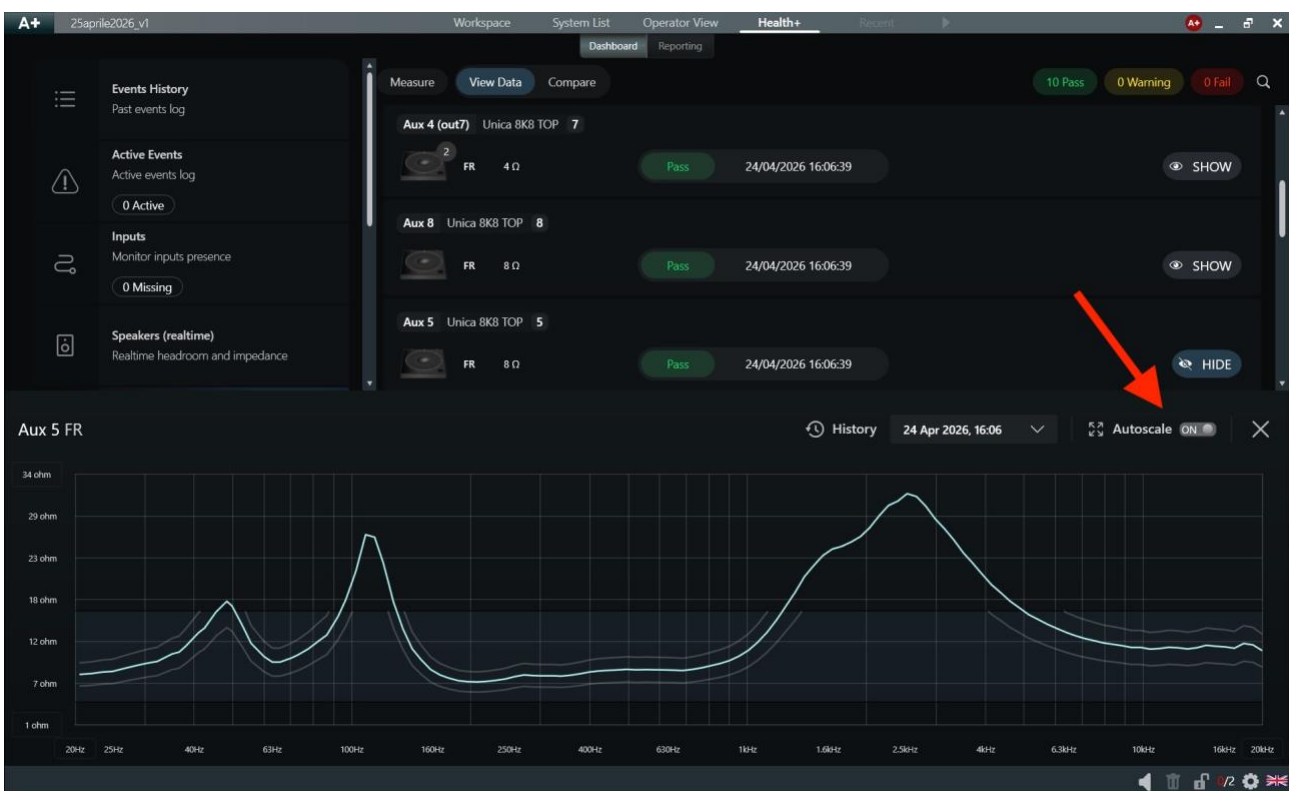


The redesigned Group Details view, listing the amplifiers and speakers linked to a group.

IMPEDANCE GRAPH AUTOSCALE IN HEALTH+

A new Autoscale toggle has been added to the impedance graph in Health+ Speaker Verification, both in the View Data and Compare panels. When enabled, the vertical (impedance) axis is automatically fitted to the measured curve, removing the need to manually zoom in or out to read the data.

Autoscale is particularly useful when comparing speakers with very different nominal impedances, as the relevant range of the graph fills the available area at all times.



Health+ Speaker Verification – the impedance graph with the new Autoscale toggle (top right).

COMPARE ALL FILTERED CURVES IN HEALTH+

The Compare panel in Health+ Speaker Verification now provides a third option for selecting which impedance curves to compare. In addition to comparing all available curves or a manually picked selection, users can now compare every curve currently filtered by the search bar.

This makes targeted comparisons across large projects far quicker: by narrowing the curve list with the search bar, the resulting subset can be compared in a single action, without picking each channel individually.

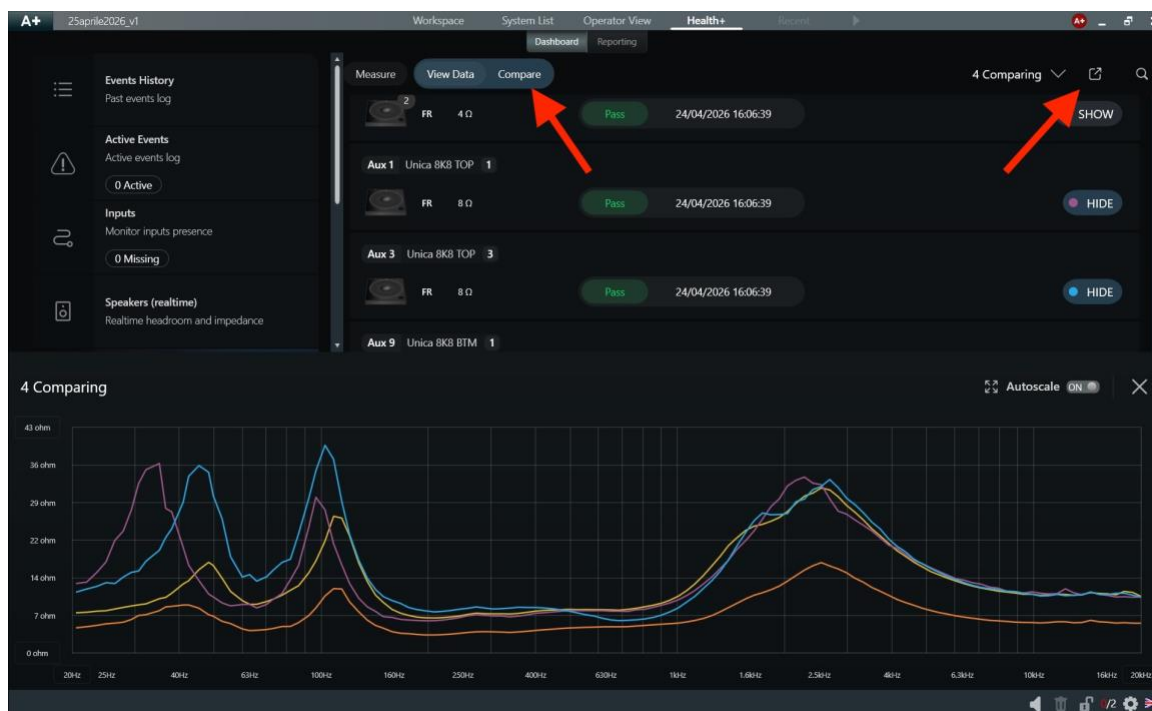
BULK CSV EXPORT OF IMPEDANCE CURVES IN HEALTH+

Health+ Speaker Verification can now export the impedance curves of multiple speakers to a single CSV file. The export is triggered from the new export icon located in the Compare panel of Health+ and applies to the channels currently selected for comparison.

A dialog lets the operator choose which data to include:

- Current data only – export only the most recent measurement of each selected channel.
- Current and historical data – export every available measurement of each selected channel, preserving the measurement history.

The resulting CSV makes it straightforward to archive measurements, build custom reports or perform offline analysis with third-party tools.



Health+ Compare panel – the new export icon (top right) launches the bulk CSV export.



Selecting which data to include in the CSV export – current measurement only or current plus historical data.

BUG FIXES AND MINOR IMPROVEMENTS

- Fixed an issue where the OperatorView WebView component did not render correctly with the latest versions of Microsoft Edge and Google Chrome.
- Minor fixes and performance improvements.

FIRMWARE BUNDLED WITH THE RELEASE

- Unica & Unica T: 1.12.0.854 (new)
- Nota: 1.2.4.0
- Mezzo Series: 1.6.1.24
- T Series: 1.12.0.696
- X Series: 1.12.0.792
- Ottocanali DSP Series: 1.12.0.782
- Quattrocanali and Duecanali DSP Series: 1.12.0.790
- Quattrocanali: 2.0.2
- Dsp4: 1.6.28
- IPAL, MDrive: 1.8.6
- WallMount Touch: 1.3.1.6 (new)
- PC ViewsHost: 3.1.0.137 (new)
- Verso: 1.0.1.30 (new)