



# **RELEASE NOTE**

**ARMONÍAPLUS 2.8**

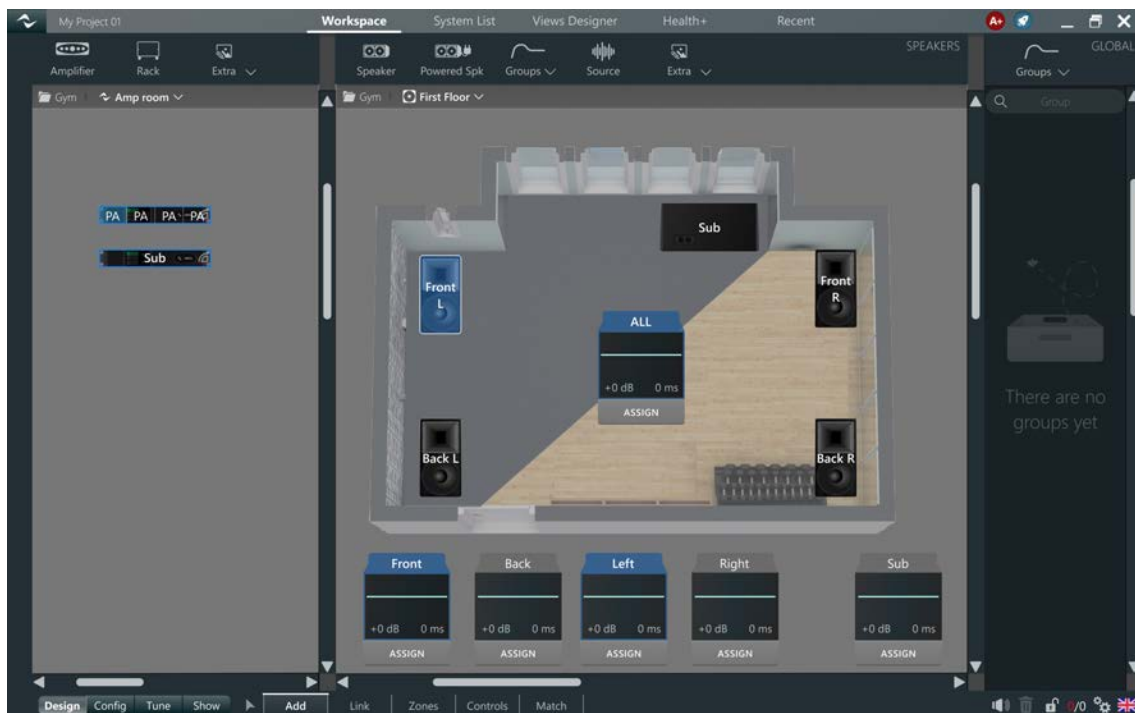
## OVERVIEW

This document highlights the latest additions for the release of ArmoníaPlus 2.8, available from March 31, 2025. ArmoníaPlus 2.8 introduces the **Unica 4T | 20K4** and **Unica 8T | 10K8** touring models, alongside multiple quality-of-life improvements designed to accelerate large-scale system configuration via the workspace. These updates enhance user control, streamline workflows, and improve system visibility, making operations more efficient and intuitive.

## FEATURES

### ENHANCED GROUP ASSIGNMENT FOR FASTER SYSTEM VISUALIZATION

Easily identify which group a speaker is assigned to with a simple selection. When a speaker is selected, its associated group names will be highlighted in blue, making it quicker to verify assignments and navigate between elements in the system.



## MORE CONTROL FROM THE SPEAKER'S PERSPECTIVE

The Advanced EQ page, accessible by double-clicking a speaker or via the EQ button in Tune / Ch Strip, now provides deeper insights into each speaker's configuration.

Users can quickly view:

- Speaker Name for clear identification;
- Preset Model, Application, and Manufacturer's EQ (if available);
- New additional tab for each assigned group.

If a group applies filters to a speaker, its corresponding tab will display a badge indicating the total filter count. This allows users to easily track and navigate group-based EQ modifications. Clicking on a group tab will redirect users to the group's EQ settings, enabling direct adjustments without unnecessary steps.

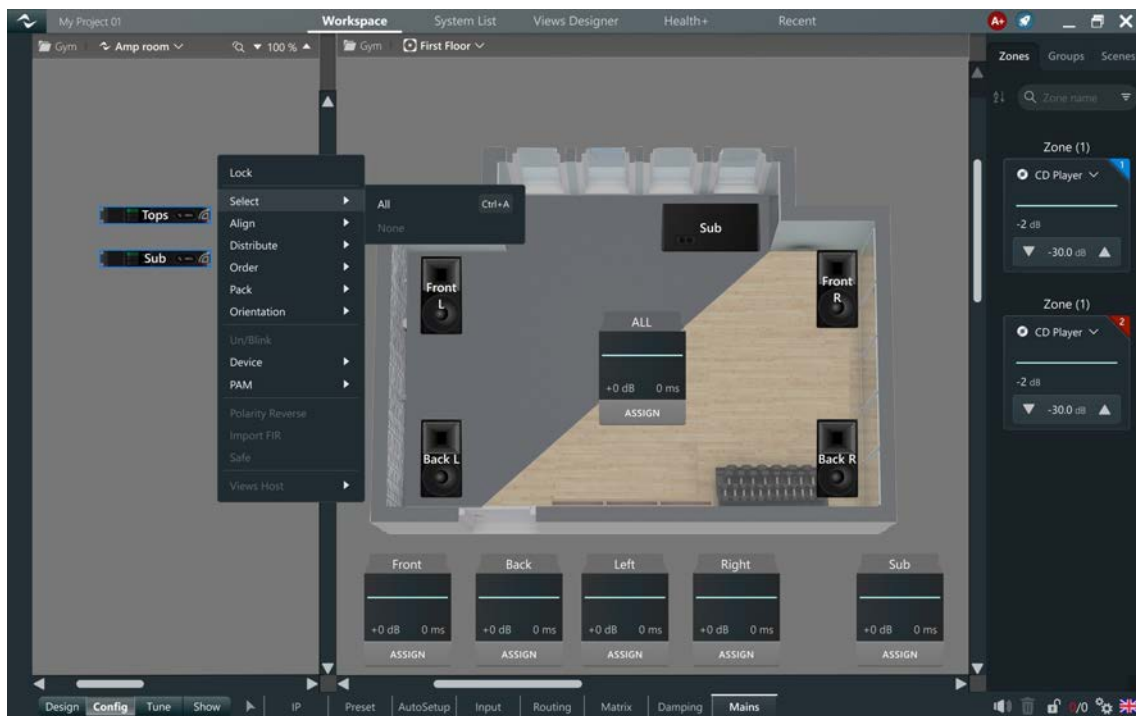


## IMPROVED DEVICE SELECTION & POWER MANAGEMENT

Managing mains-related configurations via workspace is now easier with two key improvements: “Select All” & “Config/Mains” Enhancements.

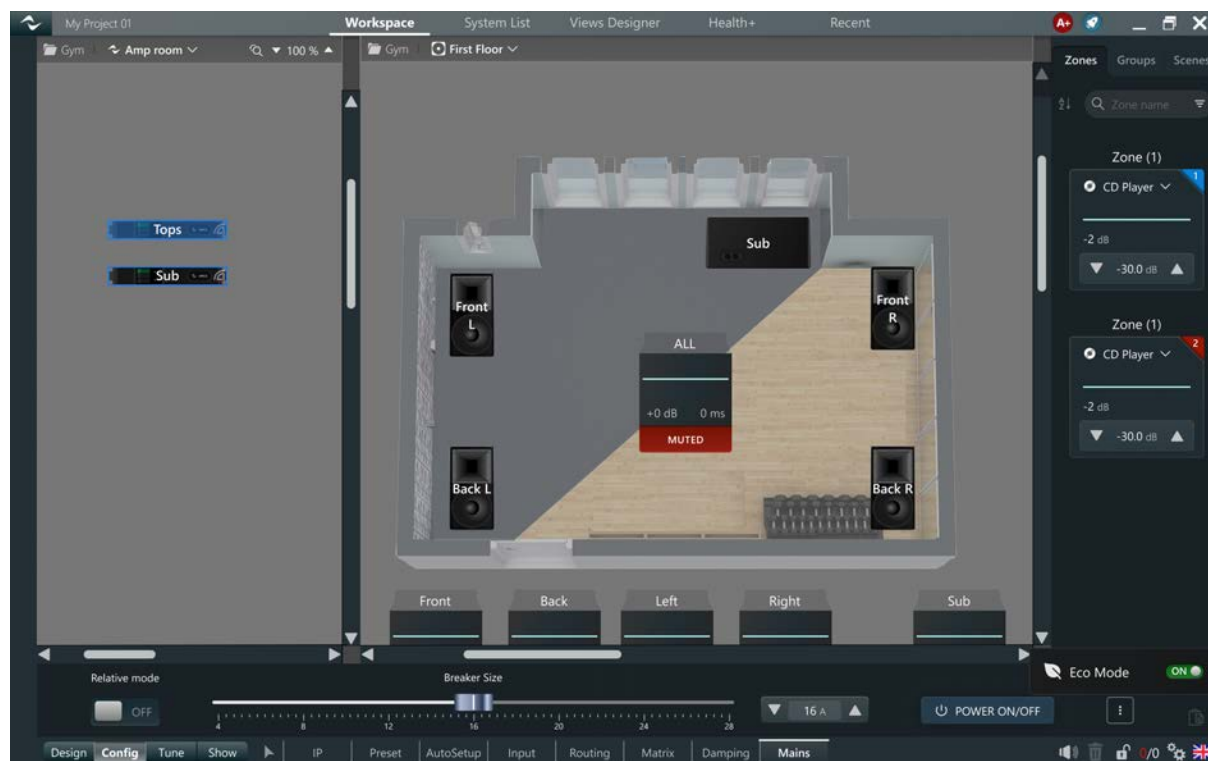
Quickly select or unselect all devices in a workspace using the right-click menu:

- Select > All (to highlight all devices)
- Select > None (to clear selections)



The Select All / None works seamlessly with the new bottom-bar “Config/Mains” controls, which now allow users to:

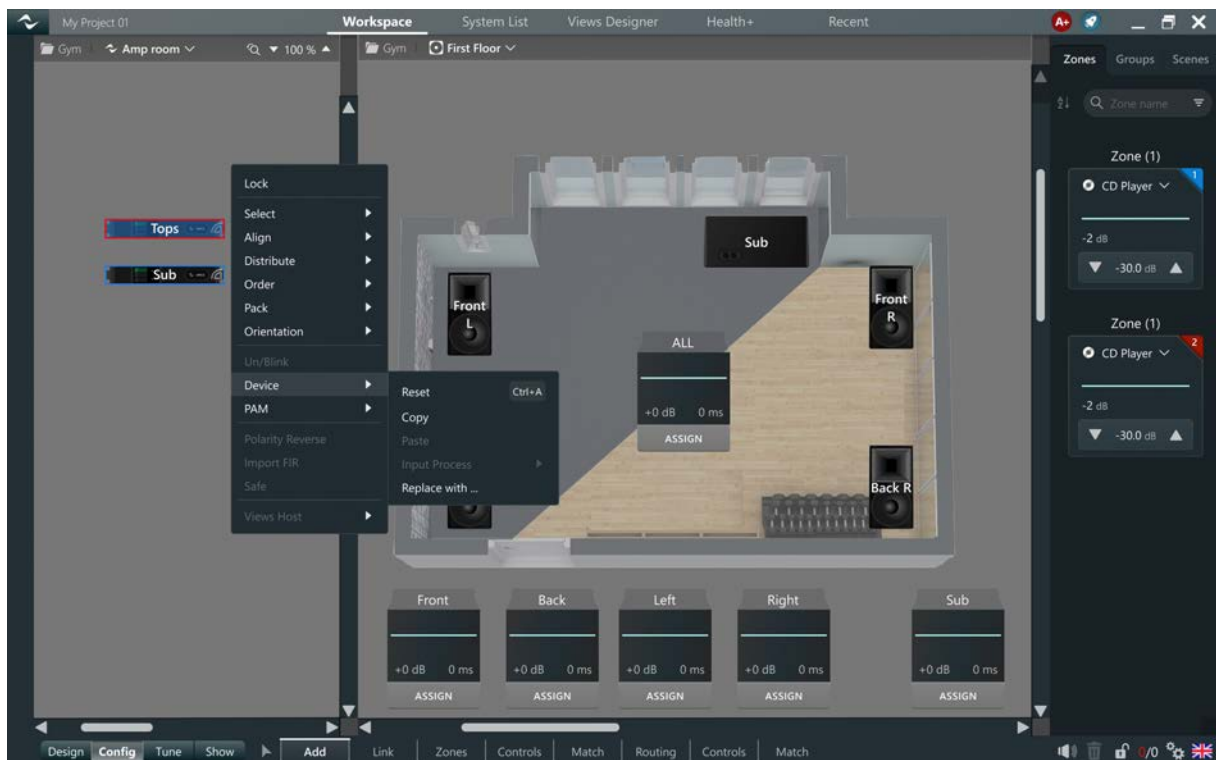
- Turn devices on/off
- Manage eco-mode settings



Previously, power control was only available in the System List, and eco-mode had to be adjusted individually for each device in the settings menu.

## “REPLACE WITH” – SEAMLESS DEVICE SWAPPING

The Replace With function allows users to swap a faulty device with a new one without manual reconfiguration. The function is accessible via right-click menu on the workspace, under Device > Replace with ...

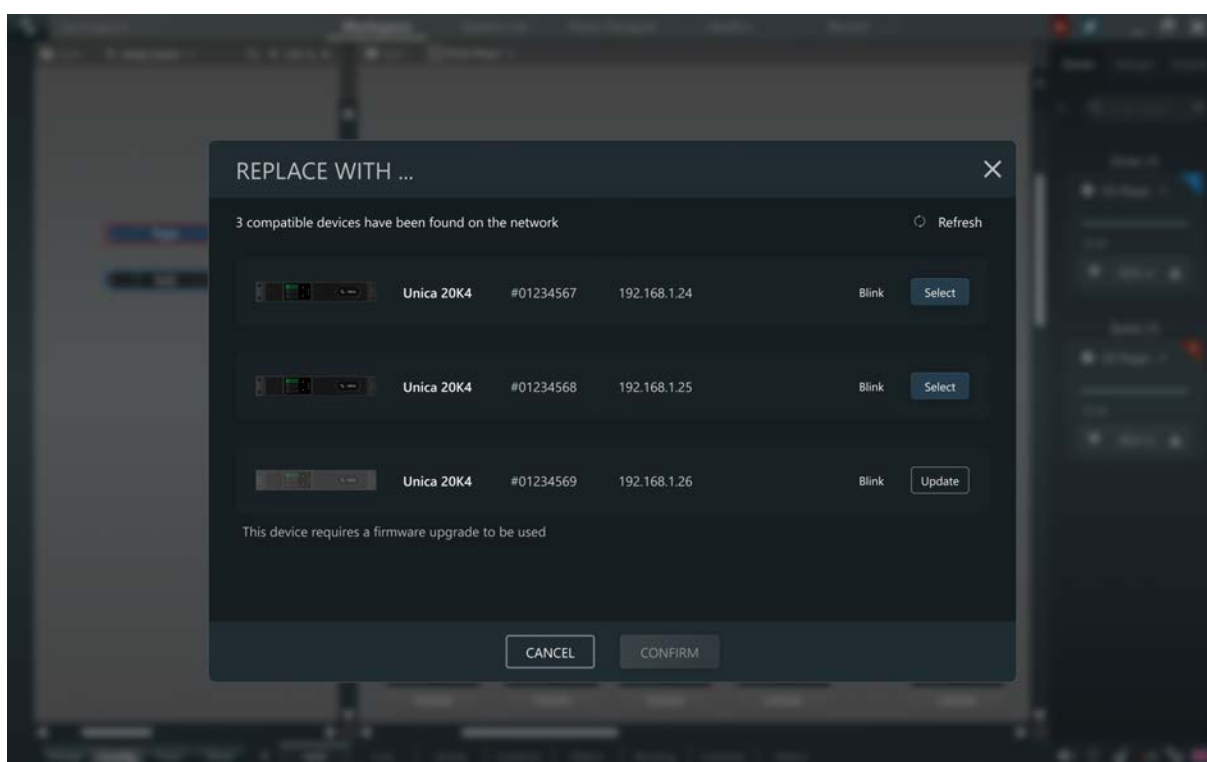


When replacing a device, the destination amplifier will automatically inherit:

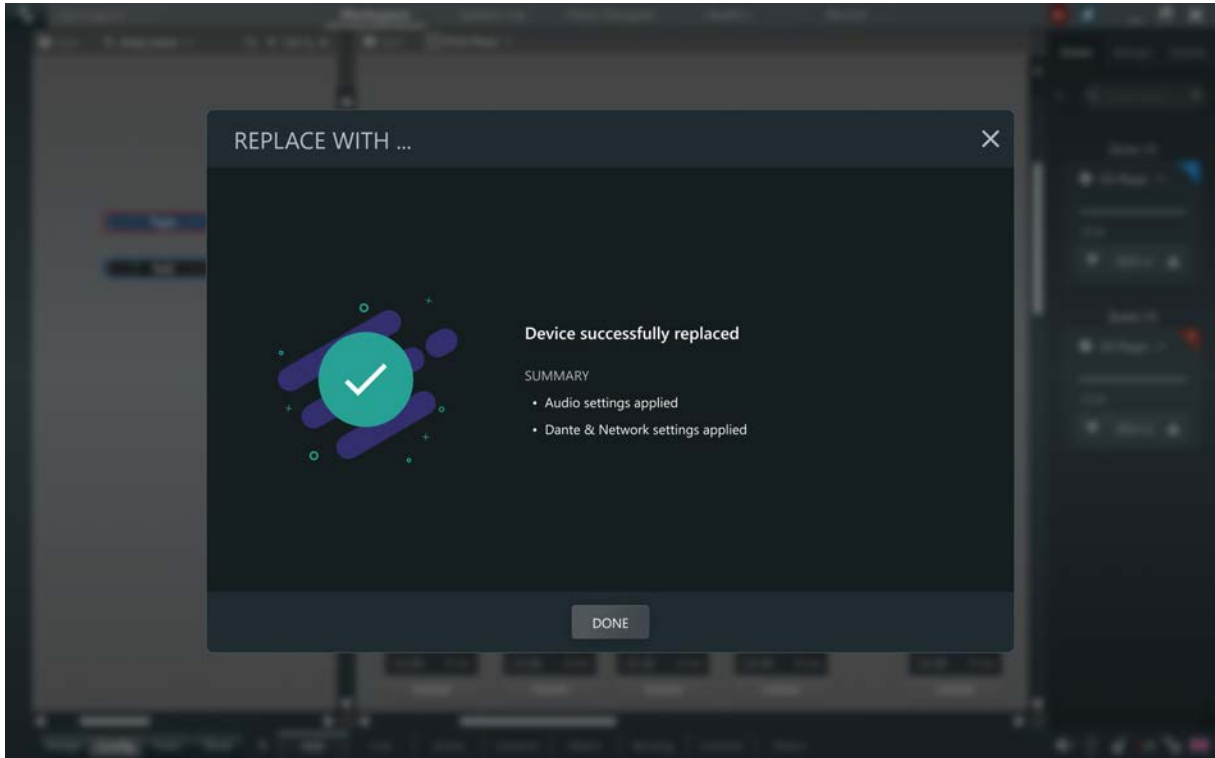
- The latest running DSP configuration;
- Control network settings;
- Dante settings and patching.

## Important Usage Notes:

- The source device must be offline before replacement to prevent conflicts;
- The destination amplifier must match the source model to ensure proper parameter mapping;
- Once replacement is complete, the original device should not be reconnected to the same network hosting the new amplifier to avoid conflicts.







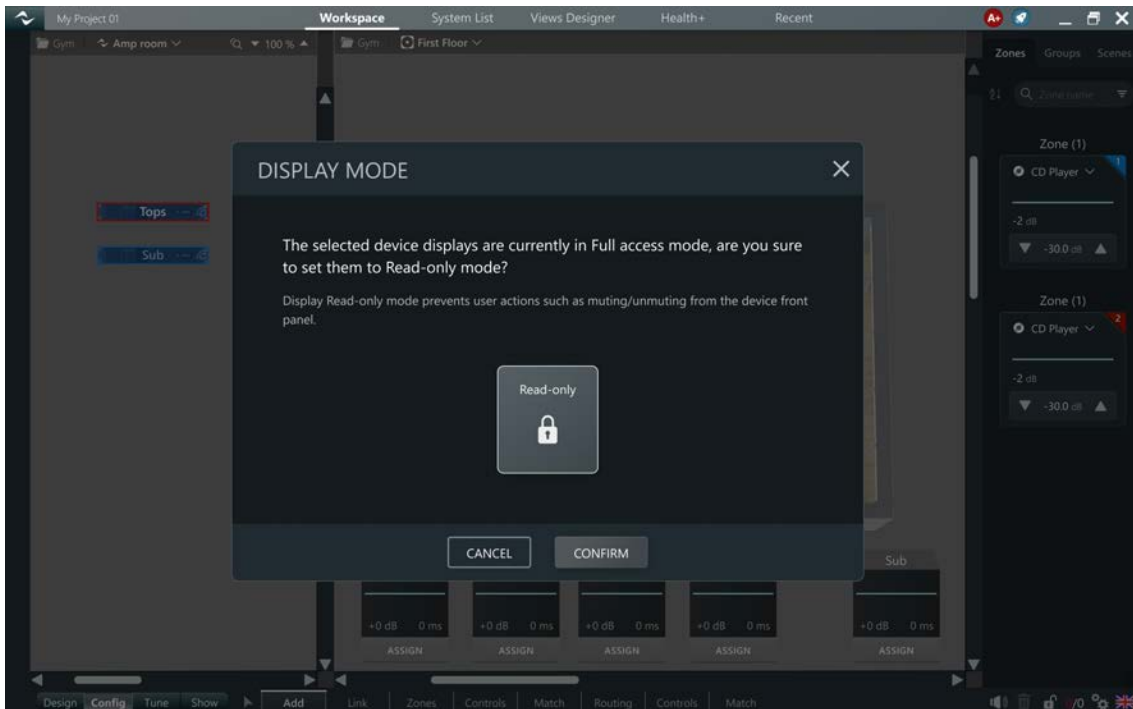
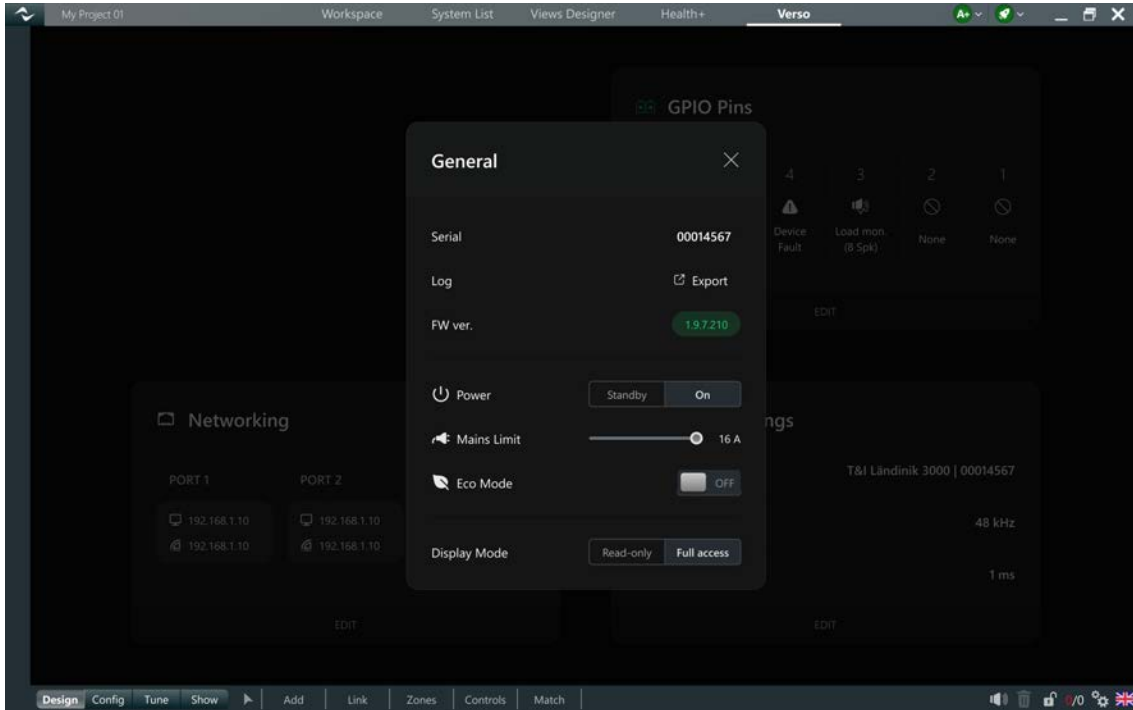
## DISPLAY READ-ONLY MODE FOR UNICA

To enhance security in unattended systems, users can now enable Display Read-Only Mode on Unica amplifiers, restricting operations such as muting/unmuting channels.

This setting can be enabled via the right-click menu:

- Device > Display Mode
- Alternatively, it can be configured through the Device General Settings panel





## CONFIG/PRESET ENHANCEMENTS

Preset selection is now more intuitive with the following improvements:

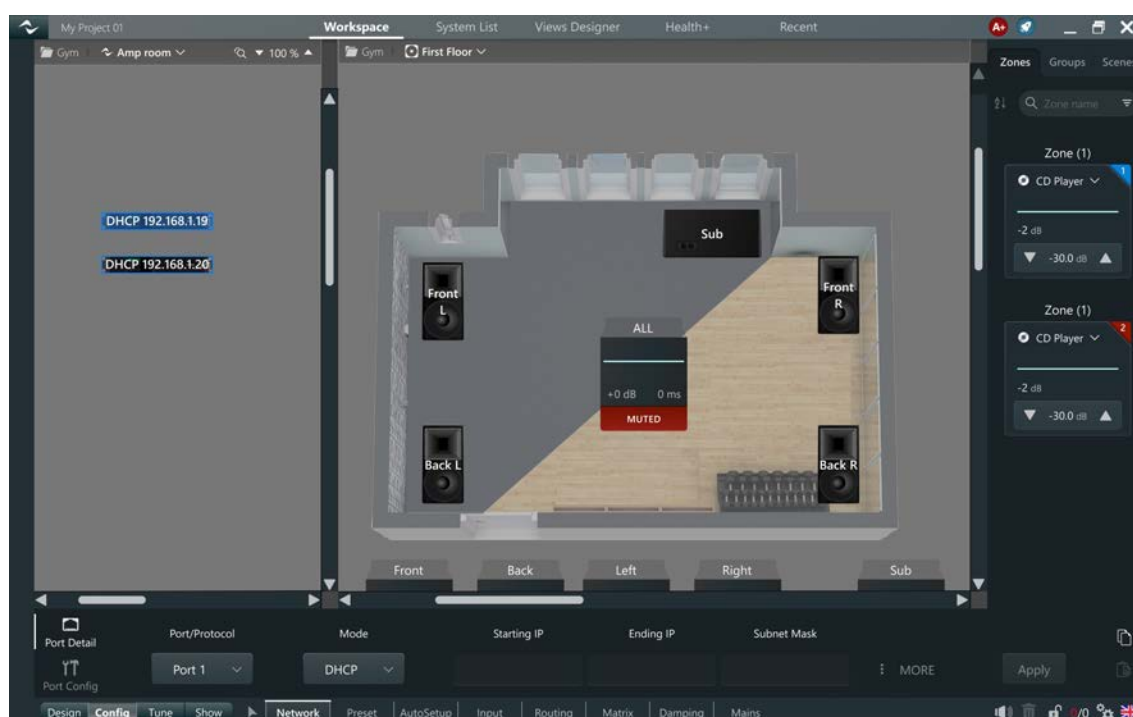
- The applied preset application is directly displayed on speakers, making it easier to confirm correct assignments;
- A new tooltip provides detailed information about Application and Manufacturer's EQ (if present) when hovering over a speaker;
- Users can now select and control preset Application and Manufacturer's EQ categories across multiple speakers, even when preset models differ—provided the Applications and Manufacturer's EQ categories share the same options.

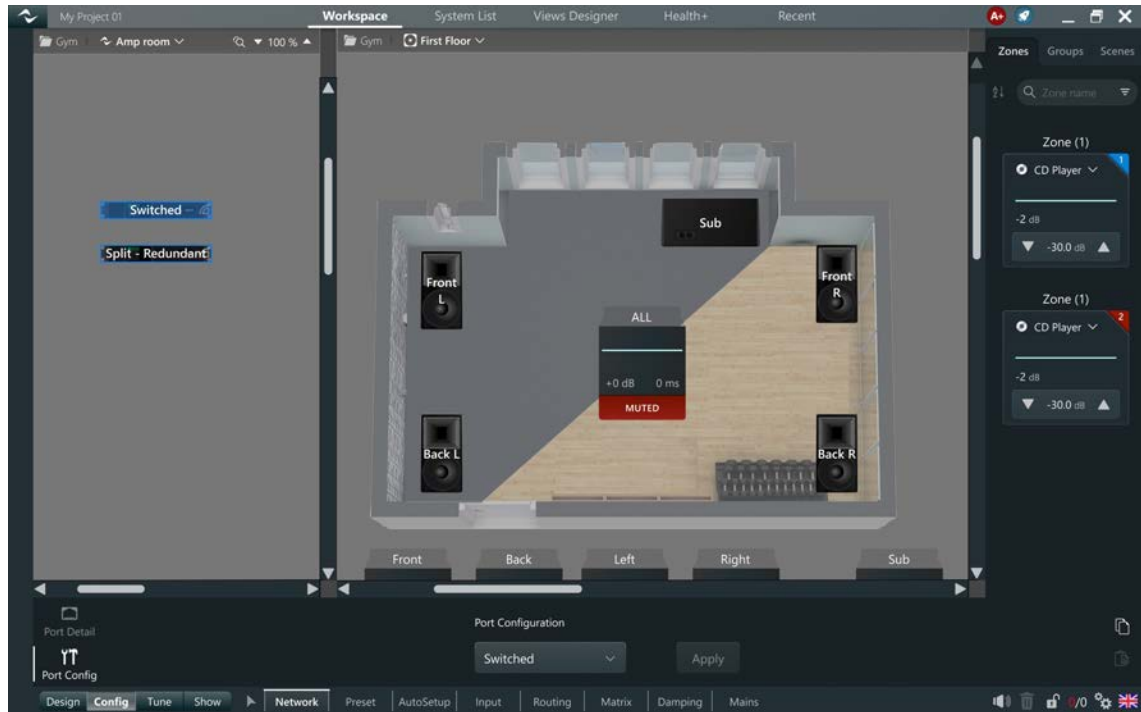


## CONFIG/NETWORK – EXPANDED NETWORK CONFIGURATION OPTIONS

The Config/IP section has been renamed to Config/Network, reflecting its broader functionality. Users can now fully configure network settings for multiple amplifiers, including:

- Changing port configurations (Switched, Split, etc.);
- Assigning IP addresses and modes across all Ethernet ports (Previously, only the control port could be modified)





## CHANNEL STRIP MODE

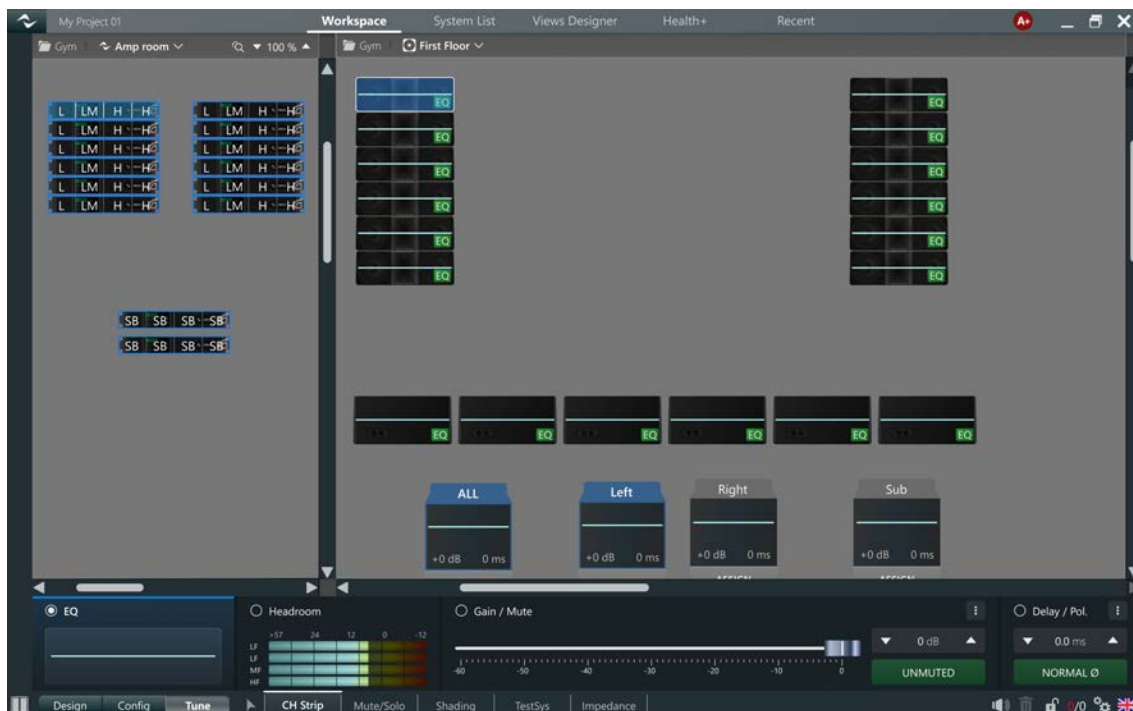
A significant enhancement is now available in the workspace tuning step, the new Channel Strip Mode merges multiple functions into a single streamlined interface.

Previously, users had to adjust settings separately across multiple functions (Gain, Mute, EQ, Delay, Polarity). This slowed down non-linear workflows, particularly in complex tuning scenarios.

Channel Strip Mode unifies:

- EQ Adjustments
- Headroom Visualization
- Gain, Mute, Delay, and Polarity Controls

This simplifies workflow, enabling faster, more intuitive adjustments, particularly for advanced system tuning.

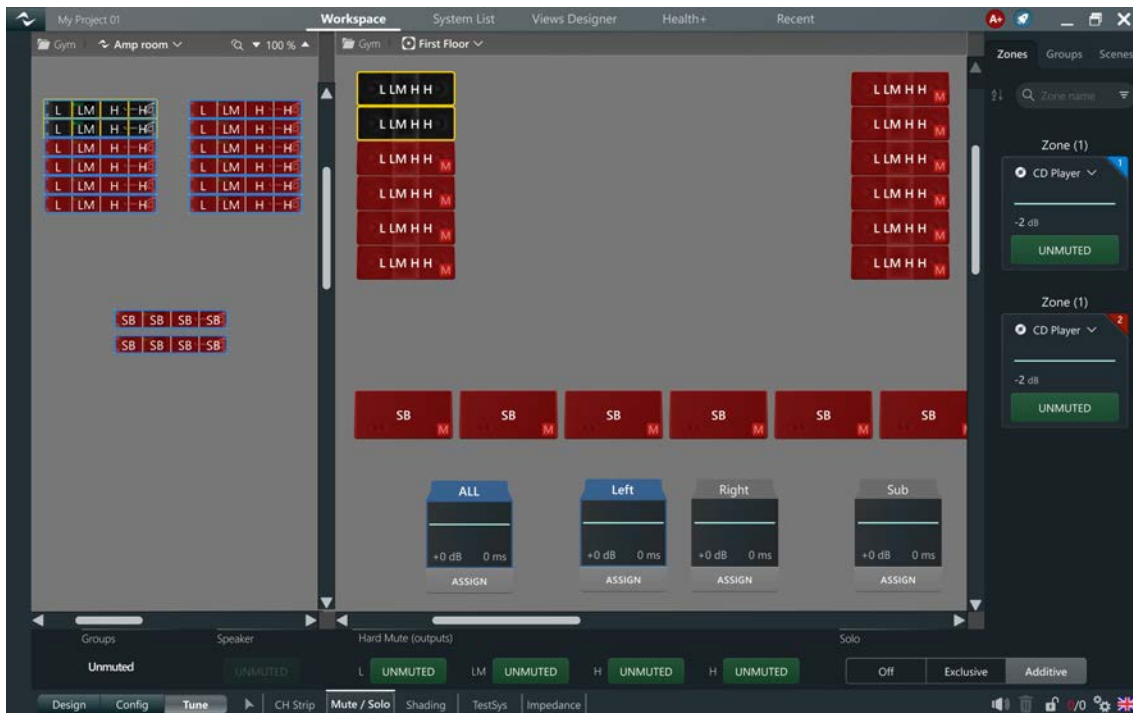


## MUTE/SOLO

Mute and Solo pages have been merged into Mute/Solo.

The new page enhances solo functionality by introducing Exclusive and Additive modes:

- Exclusive mode retains the previous behavior, allowing only one speaker to be unmuted at a time;
- Additive mode enables stacking (or “piling”) multiple speakers in solo mode, facilitating tuning and studying interactions for specific system sub-sections.



## OTHER IMPROVEMENTS AND BUGFIXES

The “Show” step has been removed, integrating the impedance monitoring function in the now simplified Tune step

ArmoníaPlus 2.8 includes bugfixes to increase the stability of the communication protocol in busy network scenarios