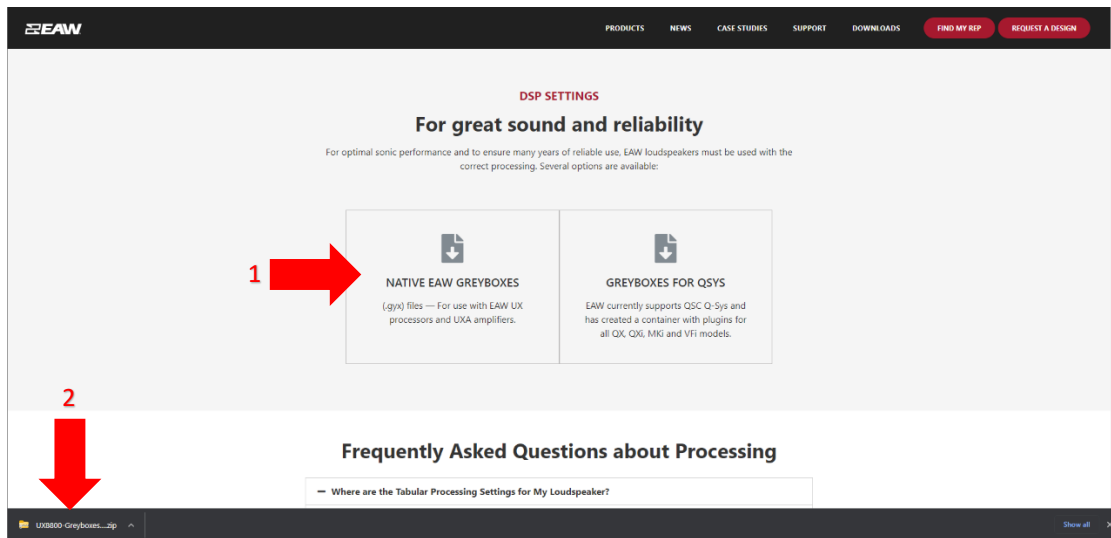
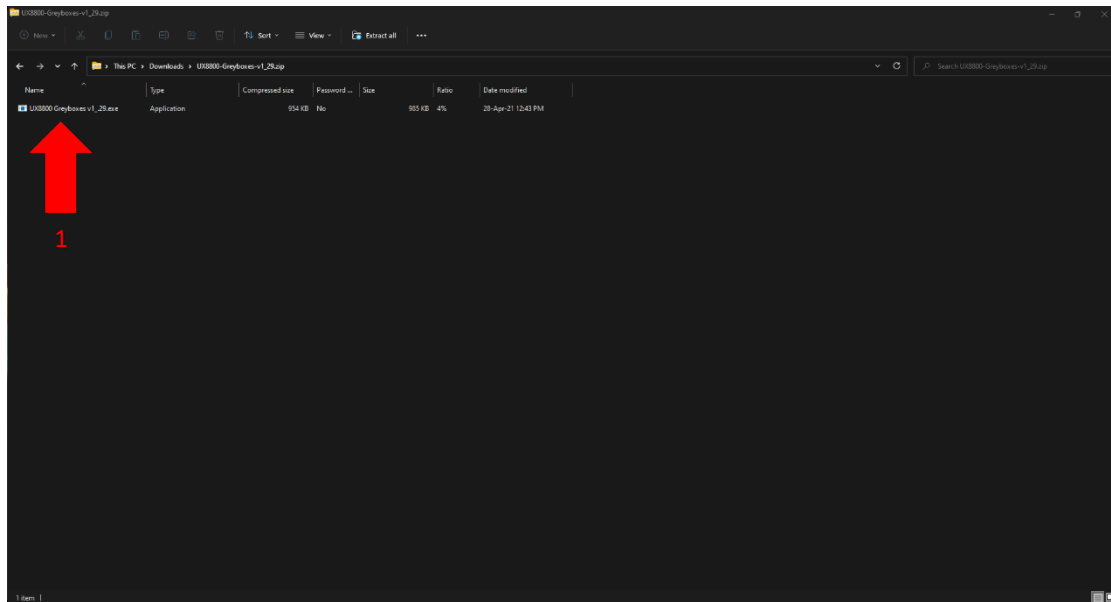
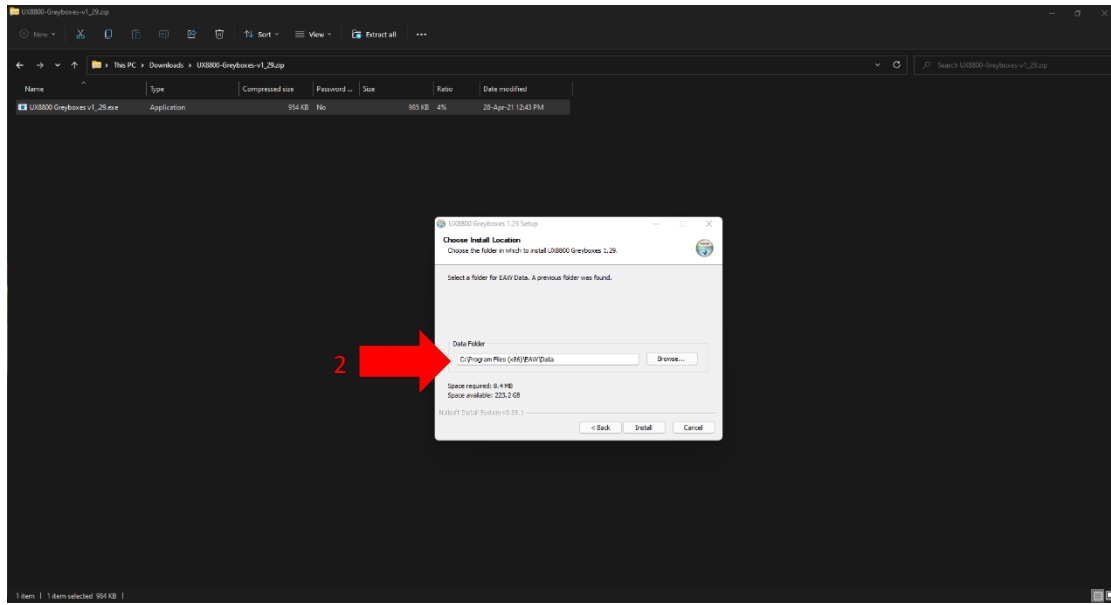


# Working with EAW GreyBox

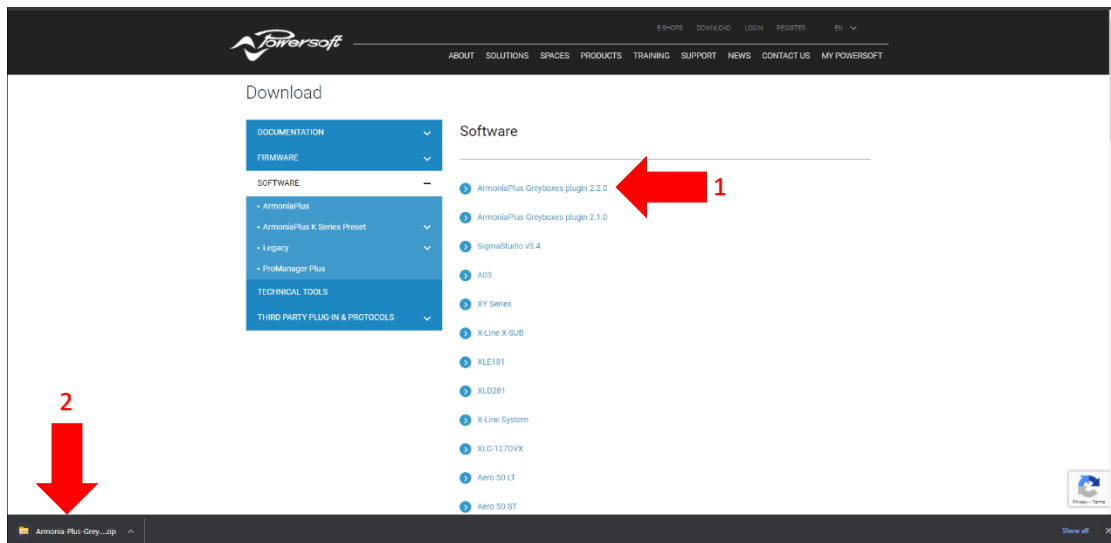


- 1) Proceed to EAW's website and download the latest "Native EAW GreyBox".
- 2) Once downloaded, proceed with the installation.

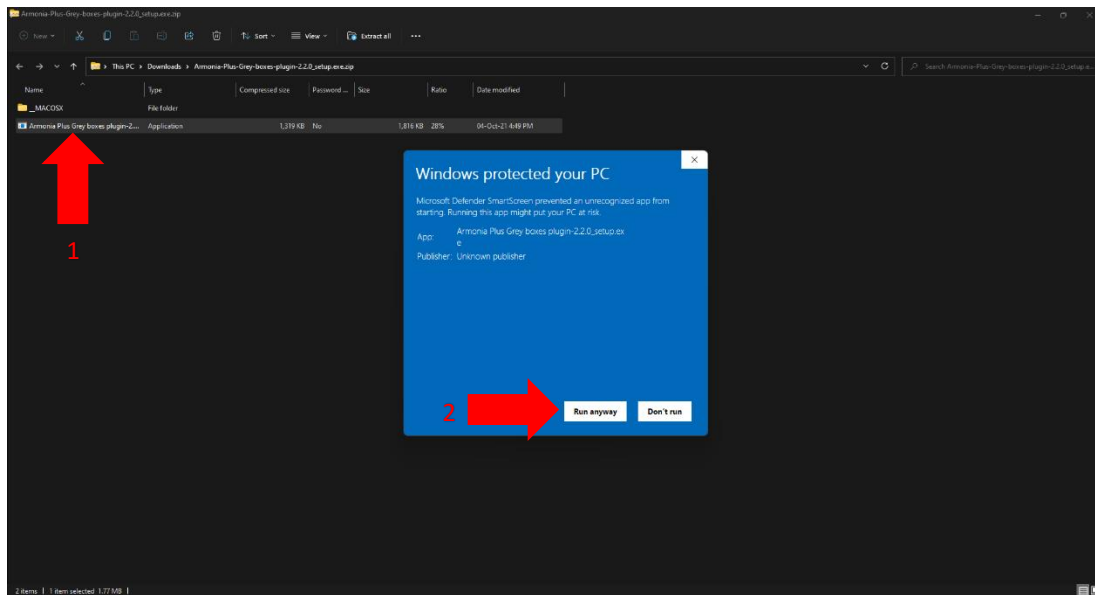




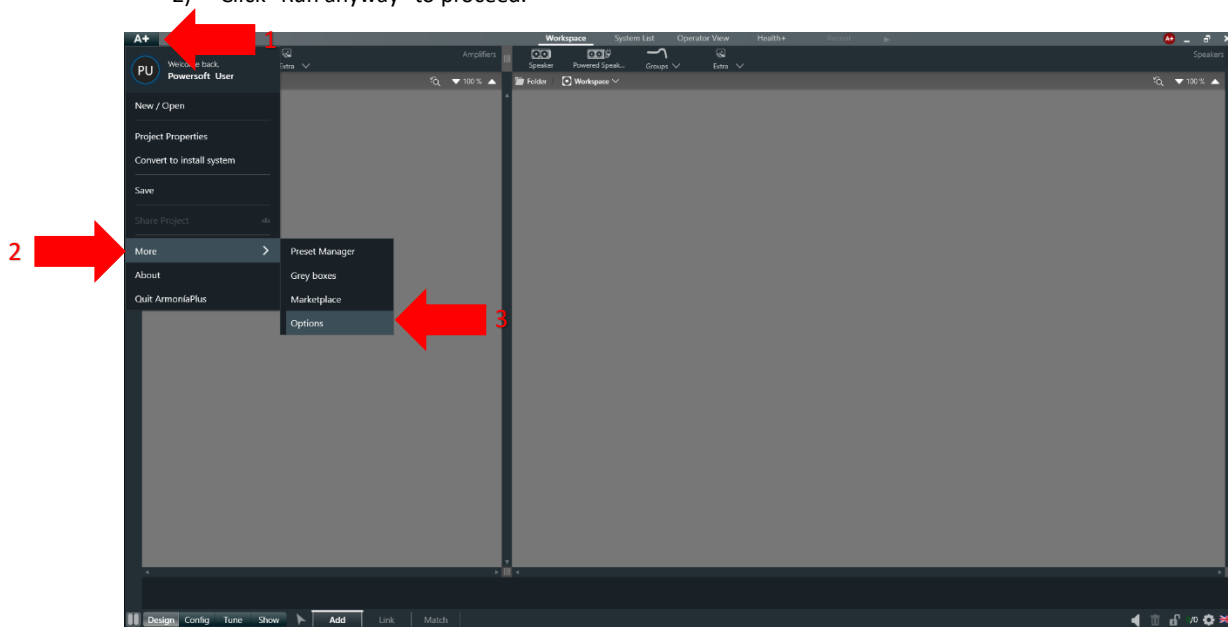
- 1) Double click the downloaded installer to install the GreyBox presets.
- 2) Take note of the installation folder to link the GreyBox preset to ArmoniaPlus.



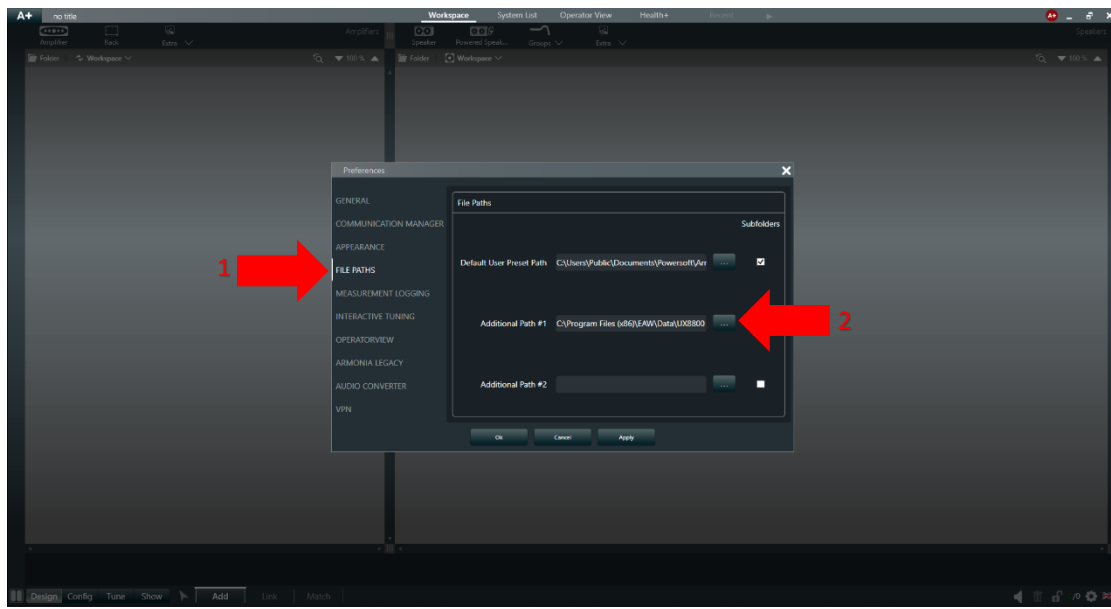
- 1) Proceed to Powersoft's website and download the latest "ArmoniaPlus Gerboxes plugin".
- 2) Once downloaded, proceed with the installation.



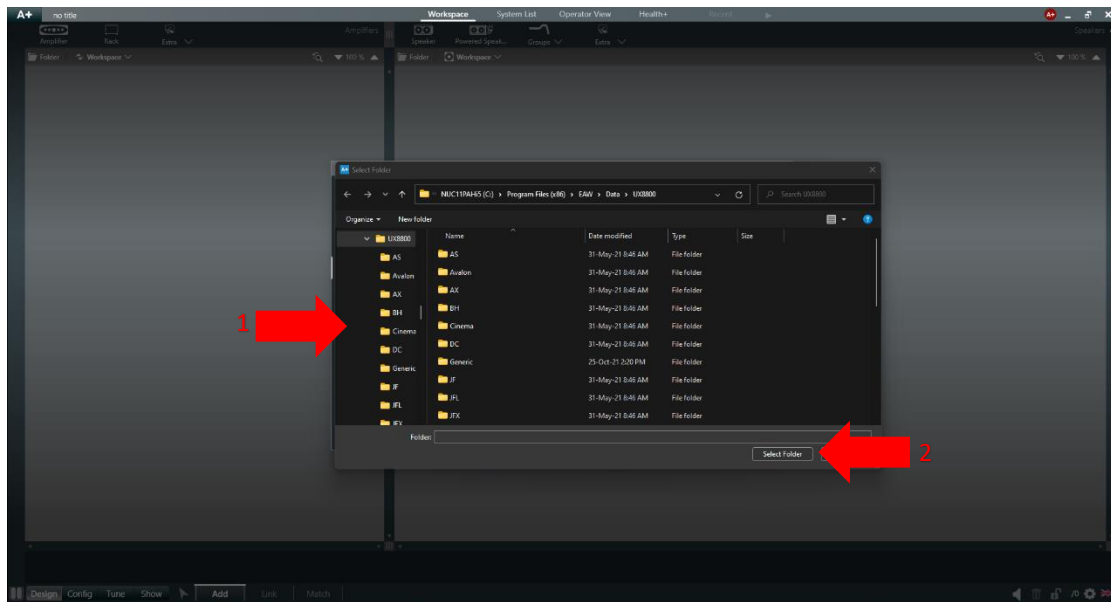
- 1) Double click the downloaded installer to install the greybox plugin.
- 2) Click “Run anyway” to proceed.



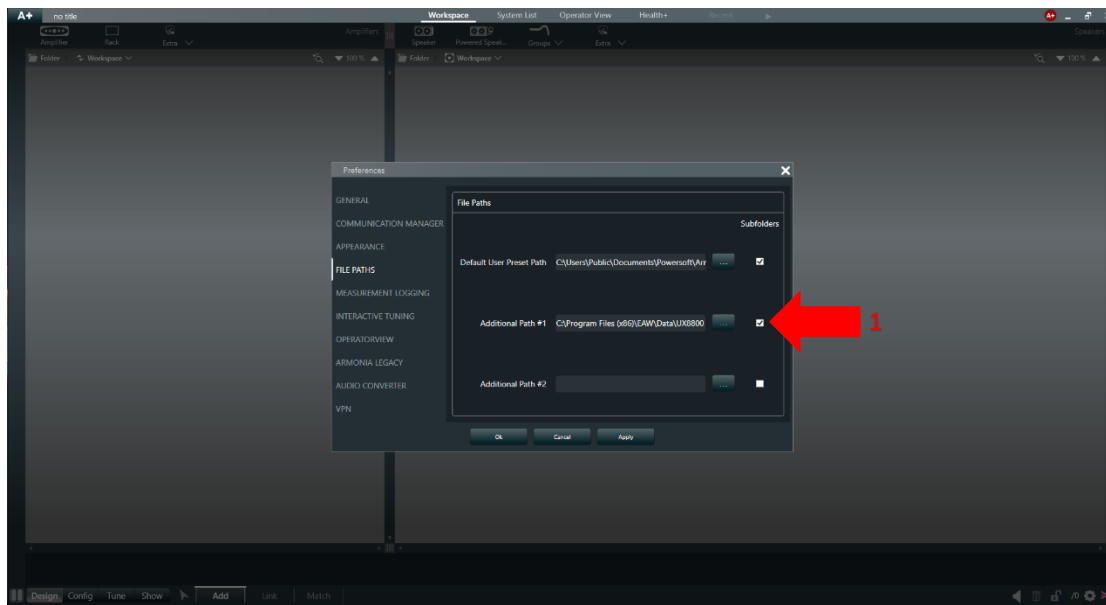
- 1) Start ArmoniaPlus and click on “A+”.
- 2) Click “More”.
- 3) Click “Options”.



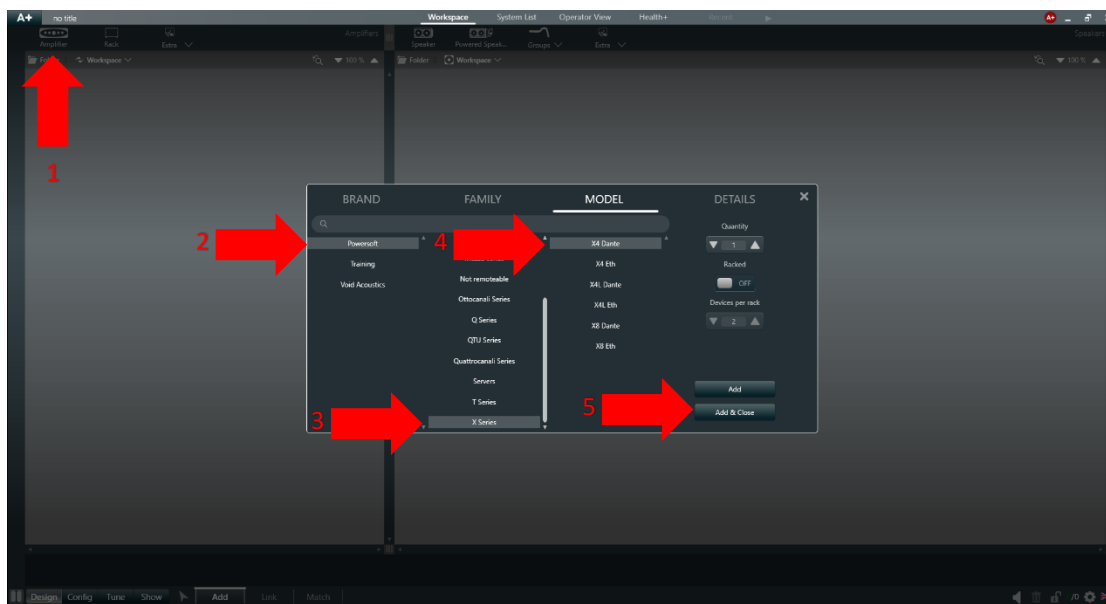
- 1) Select "File Paths".
- 2) Click on the 3 dots on the empty "Additional Path" menu.



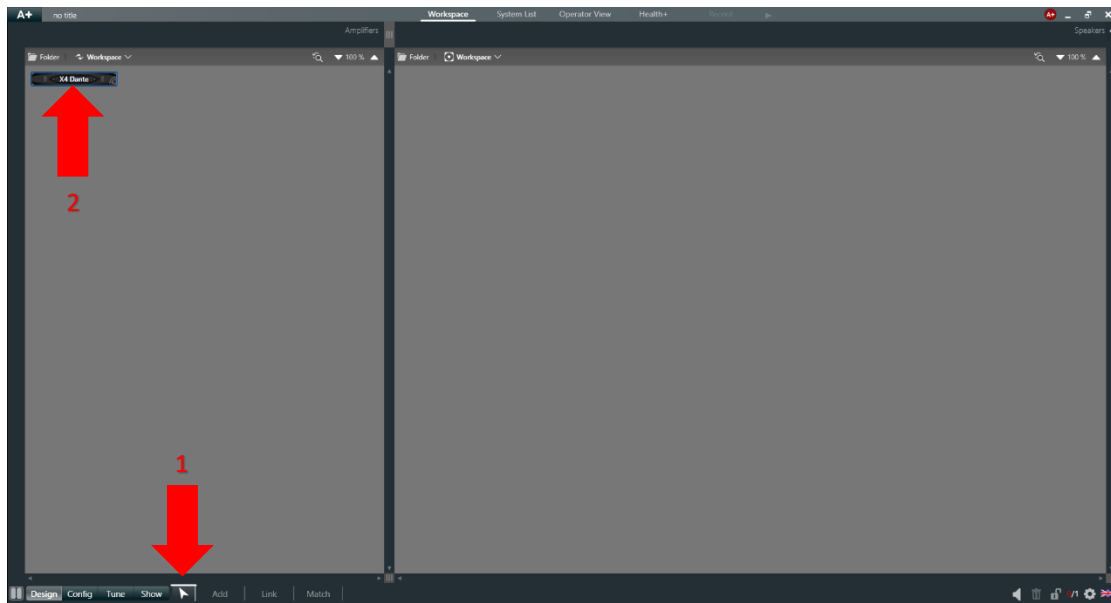
- 1) Navigate to the folder where you installed the greybox presets earlier. Select "UX8800".
- 2) Once the folder selected as shown at "1", click "Select Folder".



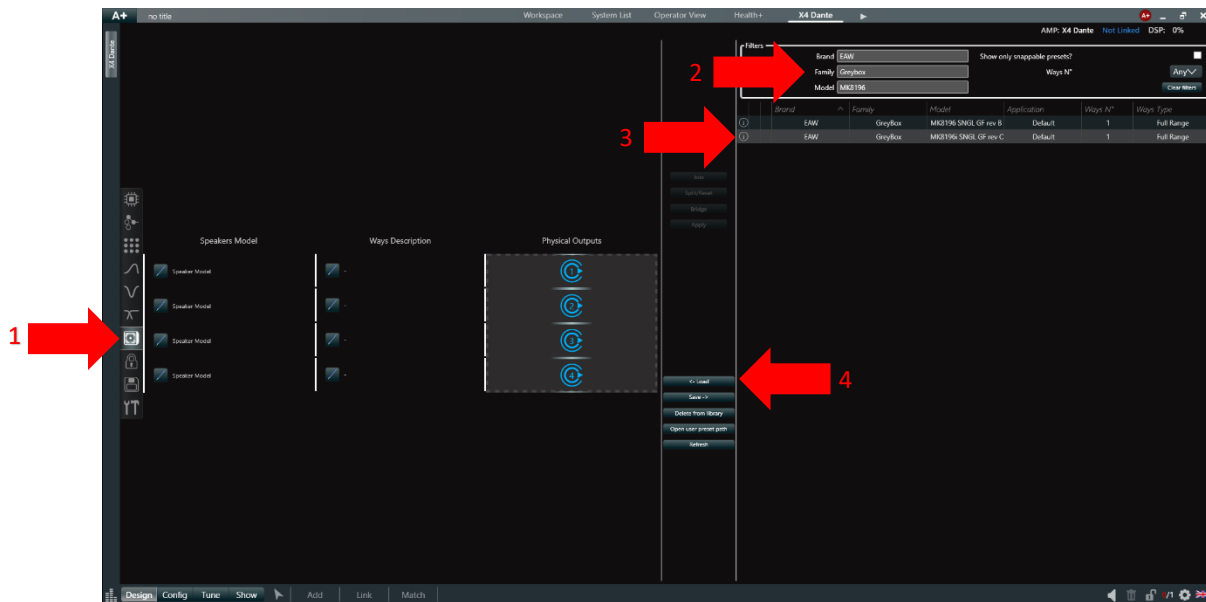
- 1) Click here to include subfolder in the link.



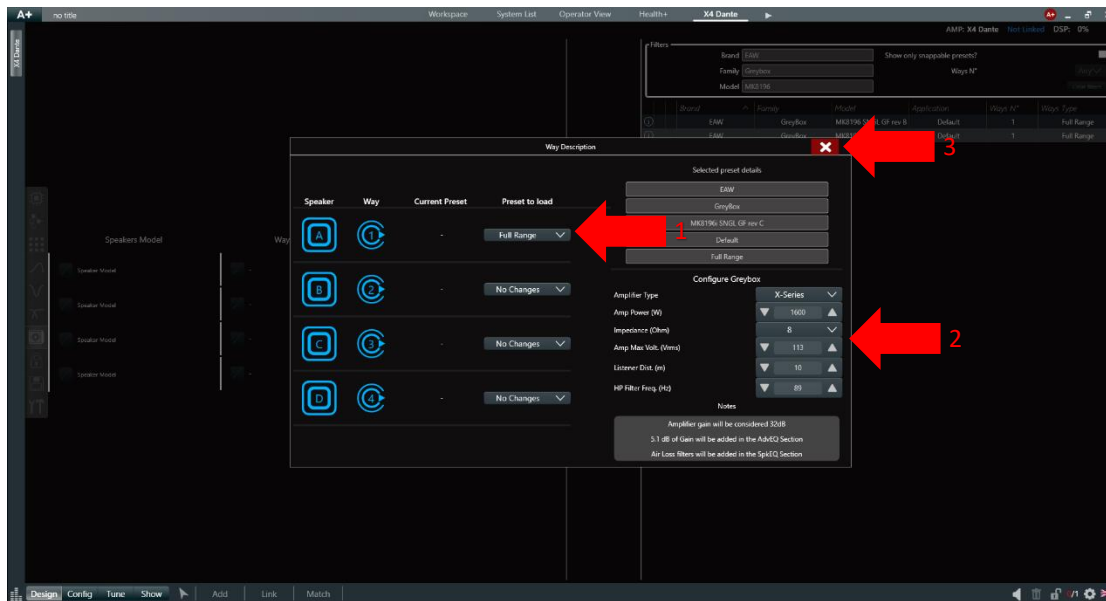
- 1) The greybox preset must be loaded into an amplifier, not link via workspace. Add an amplifier to the workspace. This example we add the X4 Dante.



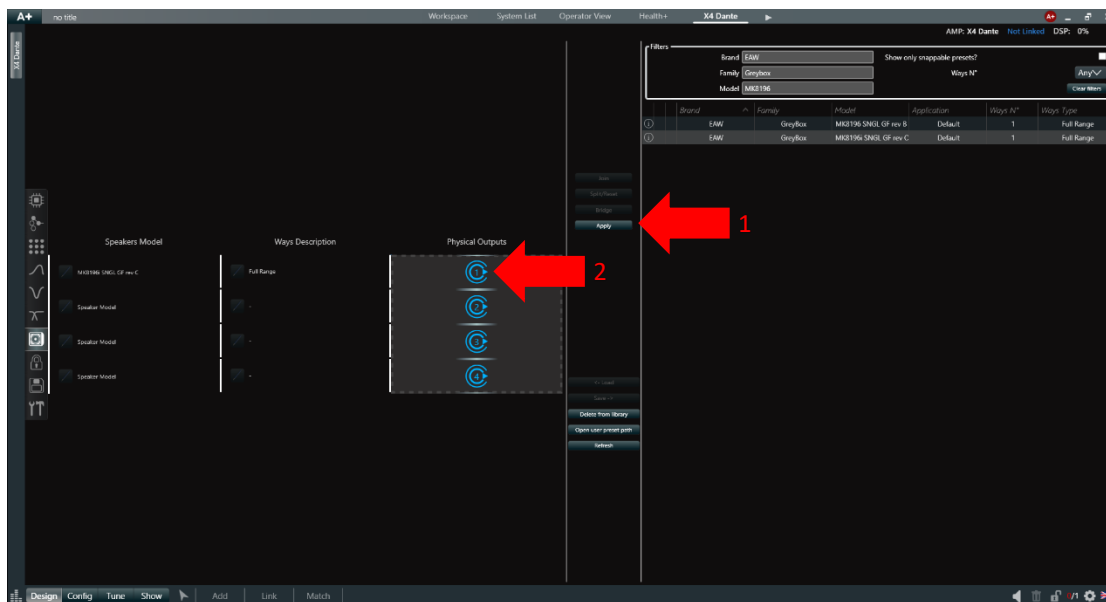
- 1) Click on the “Arrow”.
- 2) Double click on the amplifier you want to load the greybox to.



- 1) Select “Speaker Configuration” from the left menu.
- 2) Find for the greybox you want to load. This example we choose “EAW”, “Greybox” and “MK8196”.
- 3) Select the appropriate model from the window below “Filters”.
- 4) Click on “Load” to load the greybox preset.

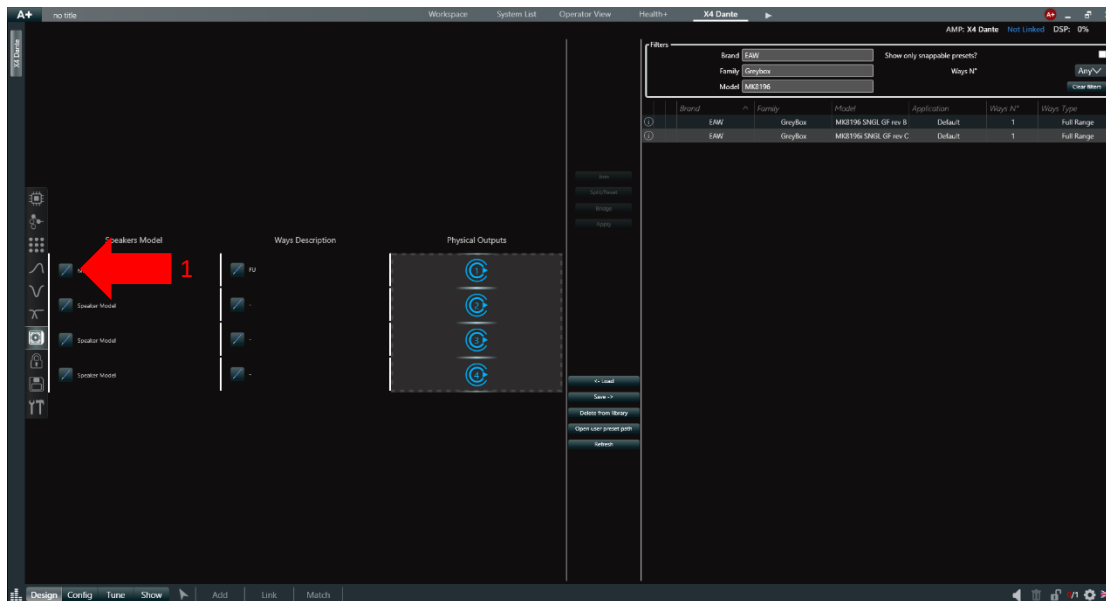


- 1) Select the output channel you want to load the greybox. In this example we select CH1. Since this is a full range preset there's only one channel is used. For a 2-way speaker, choose the channels you want to load the LF and HF (one channel each).
- 2) Enter the data for the preset. Since this is a X Series amplifier, select "X-Series" in the drop-down menu. Enter the output power of the amplifier at the impedance value of the speaker and select the impedance of the speaker from the drop-down menu.
- 3) Once done, click "X" to exit the menu.

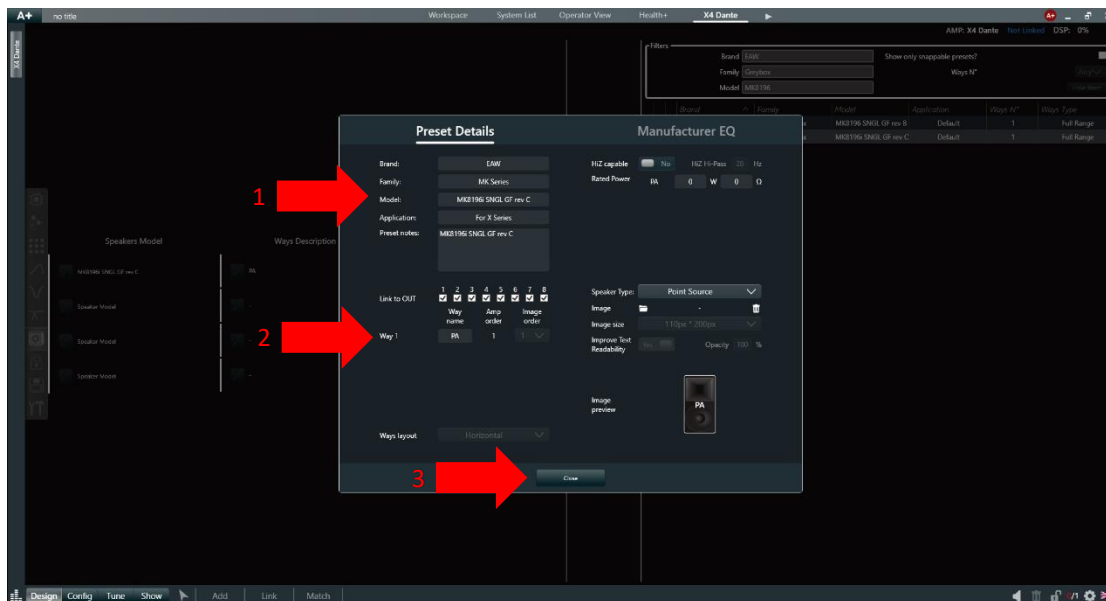


- 1) Click "Apply" to load the greybox to the selected channel.
- 2) You can see that the greybox preset is loaded to output channel 1.

## Saving the greybox preset as a workspace speaker.

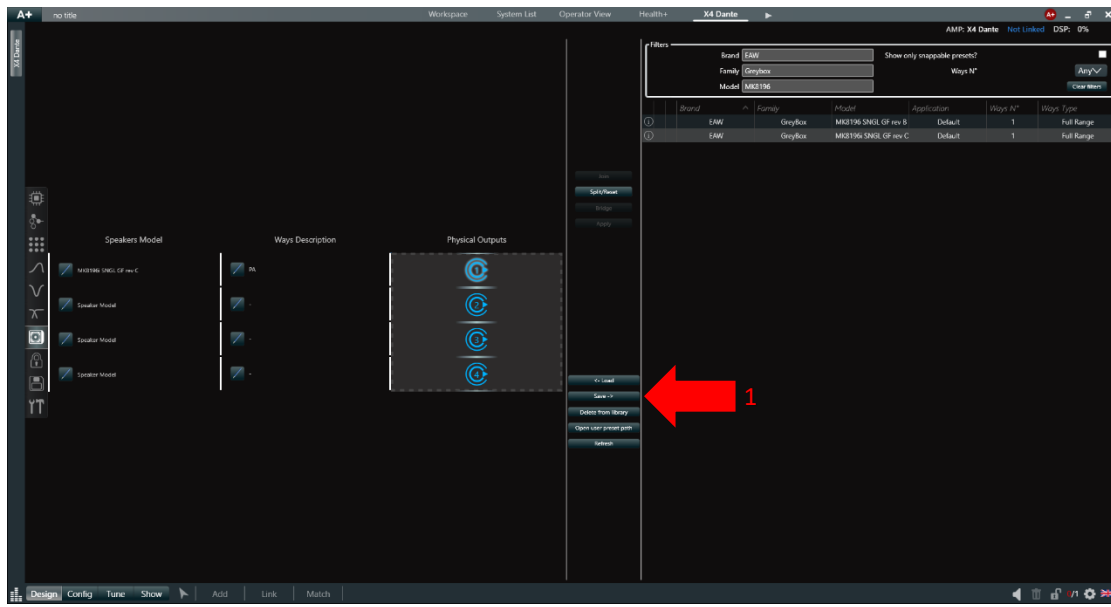


- 1) To save this preset as a workspace speaker, click here to edit the information about this speaker.



- 1) Change the "Reset Details" for the preset, such as "Family" to "MK Series" for this example, "Application" to "For X Series" and "Way1" to "PA" to better differentiate the preset created. This step is optional. Click "Close" once done.





- 1) Click "Save" to save this preset so that you can add it in the workspace.